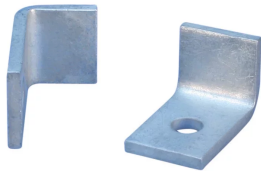


# 1 Hole Lug, 90°



## FEATURES

Provides an efficient bolting surface for grounding and power applications

Electrolytic grade copper

For use with nVent ERICO Cadweld type LA connections only

## SPECIFICATIONS

Table 1/2

Catalog Number	Material	Finish	Height (H)	Length (L)	Width (W)	Thickness (T)
B101EG90	Copper	Tinned	39.62 mm	47.5mm	38.1 mm	6.35 mm

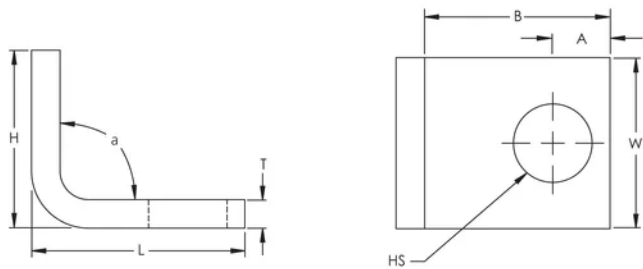
Table 2/2

Catalog Number	A	B	Hole Size (HS)	Angle (a)	Equivalent Conductor Size
B101EG90	12.7 mm	41.28 mm	17.46 mm	90 °	241.89mm <sup>2</sup>

## ADDITIONAL PRODUCT DETAILS

For sizes not listed, contact us.

DIAGRAMS



WARNING

nVent products shall be installed and used only as indicated in nVent's product instruction sheets and training materials. Instruction sheets are available at [www.nvent.com](http://www.nvent.com) and from your nVent customer service representative. Improper installation, misuse, misapplication or other failure to completely follow nVent's instructions and warnings may cause product malfunction, property damage, serious bodily injury and death and/or void your warranty.

North America

+1.800.753.9221  
Option 1 – Customer Care  
Option 2 – Technical  
Support

Europe

Netherlands:  
+31 800-0200135  
France:  
+33 800 901 793

Europe

Germany:  
800 1890272  
Other Countries:  
+31 13 5835404

APAC

Shanghai:  
+ 86 21 2412 1618/19  
Sydney:  
+61 2 9751 8500



Our powerful portfolio of brands:

CADDY   ERICO   HOFFMAN   ILSCO   SCHROFF   TRACHTE