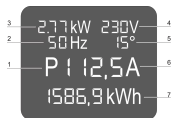
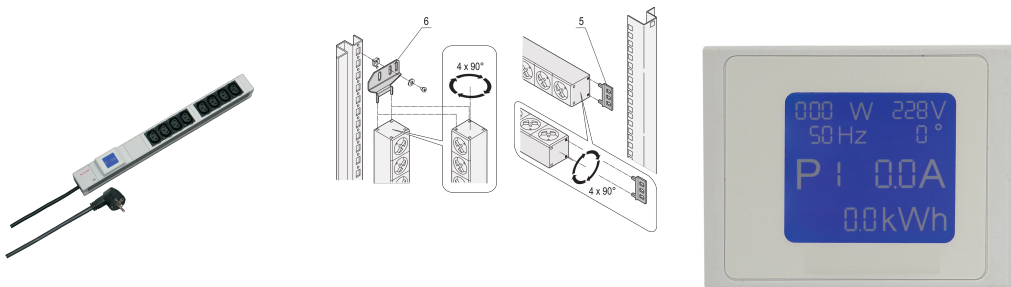


Socket Strip, IEC C13, Metered

CATALOG NUMBER

60110-296



PDU with local power meter. Relevant Power data are shown on an integrated display.

CERTIFICATIONS



FEATURES

Socket strips can be rotated through all four directions (in 90° increments) during installation

Mounting height 1 U

Integrated measurement and display via local display unit

Socket strips with IEC 60320-C13 sockets

Horizontal and vertical mounting

PRODUCT ATTRIBUTES

Product Type: Socket Strip

Socket Type: IEC C13

Socket Quantity: 8

Color: Grey

Switched Outlets: Yes

Length: 438.5mm

Voltage AC: 230V

Depth: 44mm

Material: Aluminum; Polyamide

Net Weight: 0.906kg

Package Quantity: 1

WARNING

nVent products shall be installed and used only as indicated in nVent's product instruction sheets and training materials. Instruction sheets are available at www.nvent.com and from your nVent customer service representative. Improper installation, misuse, misapplication or other failure to completely follow nVent's instructions and warnings may cause product malfunction, property damage, serious bodily injury and death and/or void your warranty.

North America

All locations
+1.763.422.2661
Chat with us:
nvent.com/schroff

Europe

Straubenhardt, Germany
+49.7082.794.0
Betschdorf, France
+33.3.88.90.64.90
Warsaw, Poland
+48.22.209.98.35
Assago, Italy
+39.02.932.7141
Chat with us:
nvent.com/schroff

Asia

Shanghai, China
+86.21.2412.6943
Qingdao, China
+86.532.8771.6101
Singapore
+65.6768.5800
Shin-Yokohama, Japan
+81.45.476.0271
Chat with us:
nvent.com/schroff

Middle East & India

Dubai, United Arab
Emirates
+971.4.378.1700
Bangalore, India
+91.80.6715.2001
Istanbul, Turkey
+90.216.250.7374
Chat with us:
nvent.com/schroff



Our powerful portfolio of brands:

CADDY ERICO HOFFMAN ILSCO SCHROFF TRACHTE