

Drive Pin Assembly Kit



Drive pin assemblies attach to the piston of the pin driver. The assemblies consist of grommet supports, grommets, drive pins and retaining rings. Each drive pin assembly is designed for a specific reinforcing bar size and is quickly and easily changed in the field.

FEATURES

Color-coded and stamped with appropriate reinforcing bar size

Designed to withstand the forces required for assembly

Easily replaced when worn

SPECIFICATIONS

Table 1/2

Catalog Number	Article Number	Rebar Size, Metric	Rebar Size, US	Rebar Size, Canada	Diameter (Ø)	Length (L)
ML542	145780	20 mm	#6	20M	37 mm	23mm
ML543	145770	16 mm	#5	15M	37 mm	37mm
ML544	145760	12 mm	#4	10M	37 mm	49mm

Table 2/2

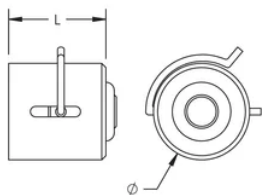
Catalog Number	Article Number	Unit Weight	Color
ML542	145780	0.13 kg	Yellow
ML543	145770	0.18 kg	Orange

Catalog Number	Article Number	Unit Weight	Color
ML544	145760	0.23 kg	Red

ADDITIONAL PRODUCT DETAILS

Prior to installation, please read and understand the detailed instructions and safety notices provided in the nVent LENTON Quick Wedge Operator's Manual.

DIAGRAMS



WARNING

nVent products shall be installed and used only as indicated in nVent's product instruction sheets and training materials. Instruction sheets are available at www.nvent.com and from your nVent customer service representative. Improper installation, misuse, misapplication or other failure to completely follow nVent's instructions and warnings may cause product malfunction, property damage, serious bodily injury and death and/or void your warranty.

North America

+1.800.753.9221

Option 1 – Customer Care

Option 2 – Technical

Support

Europe

Netherlands:

+31 800-0200135

France:

+33 800 901 793

Europe

Germany:

800 1890272

Other Countries:

+31 13 5835404

APAC

Shanghai:

+ 86 21 2412 1618/19

Sydney:

+61 2 9751 8500



Our powerful portfolio of brands:

CADDY

ERICO

HOFFMAN

ILSCO

SCHROFF

TRACHTE