

# D6 Mechanical Anchor with Male Bar, One Piece



The one-piece D6 mechanical anchor is used when there is not an adequate length of reinforcing bar to be threaded in a standard nVent LENTON threading machine. This anchor is ideal for use in segmental construction when the mating elements have limited space or are severely congested. This system, when combined with the nVent LENTON Form Saver, eliminates hooked bar congestion, protruding dowels and the need to drill holes in expensive formwork.

## FEATURES

Replaces conventional hooked reinforcing bar

Simplifies reinforcing bar placement and lowers placing costs

Color coded bar end protector protects the nVent LENTON taper thread while in transit

Head area exceeds 5x bar area (net 4x)

## SPECIFICATIONS

Table 1/2

Catalog Number	Material	Finish	100% U.S. Domestic Content	Rebar Size, Metric	Rebar Size, US	Rebar Size, Canada
EL12D6X5M	Steel	Plain	Yes	12 mm	#4	10M

Table 2/2

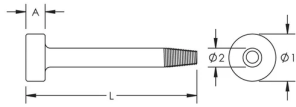
Catalog Number	Diameter 1 (Ø1)	Diameter 2 (Ø2)	Length (L)	A	Unit Weight	Package Quantity
EL12D6X5M	35 mm	14 mm	127mm	14 mm	0.23 kg	60

**Designed to Meet:** ACI 318;AS3600;ASTM A970

ADDITIONAL PRODUCT DETAILS

Bar dimensions and weights listed may vary by region. Coupler sizes not shown may be available by special order. Contact your nVent LENTON representative for more information.

DIAGRAMS



WARNING

nVent products shall be installed and used only as indicated in nVent's product instruction sheets and training materials. Instruction sheets are available at [www.nvent.com](http://www.nvent.com) and from your nVent customer service representative. Improper installation, misuse, misapplication or other failure to completely follow nVent's instructions and warnings may cause product malfunction, property damage, serious bodily injury and death and/or void your warranty.

North America

+1.800.753.9221  
Option 1 – Customer Care  
Option 2 – Technical  
Support

Europe

Netherlands:  
+31 800-0200135  
France:  
+33 800 901 793

Europe

Germany:  
800 1890272  
Other Countries:  
+31 13 5835404

APAC

Shanghai:  
+ 86 21 2412 1618/19  
Sydney:  
+61 2 9751 8500



Our powerful portfolio of brands:

CADDY   ERICO   HOFFMAN   ILSCO   SCHROFF   TRACHTE