

2 Hole Offset Lug

Data Solutions



FEATURES

Provides an efficient bolting surface for grounding and power applications

Electrolytic grade copper

For use with nVent ERICO Cadweld type LA connections only

SPECIFICATIONS

Material: Copper

Finish: Tinned

Table 1/2

| Catalog Number | Type | Height (H) | Length (L) | Width (W) | Thickness (T) | A |
|----------------|-----------|------------|------------|-----------|---------------|--------|
| B103AAOL003 | Non-NEMA® | 14.29mm | 95.25mm | 12.7mm | 1.59mm | 15.9mm |
| B102CEOL | NEMA® | 15.88mm | 114.3mm | 25.4mm | 3.18mm | 15.9mm |
| B102CEOL001 | NEMA® | 15.88mm | 114.3mm | 25.4mm | 3.18mm | 15.9mm |
| B102QQOL | NEMA® | 15.87mm | 114mm | 25.4mm | 3.17mm | 15.8mm |

| CatalogNumber | Type | Height (H) | Length (L) | Width (W) | Thickness (T) | A |
|---------------|-----------|------------|------------|-----------|---------------|--------|
| B103CEOL003 | Non-NEMA® | 15.88mm | 87.12mm | 25.4mm | 3.18mm | 11.1mm |
| PBB102CEOL | NEMA® | 16mm | 114.3mm | 25.4mm | 3.18mm | 15.9mm |
| B102DEOL | NEMA® | 17.53mm | 114.3mm | 25.4mm | 4.76mm | 15.9mm |
| B103DEOL | Non-NEMA® | 27.05mm | 114.3mm | 25.4mm | 4.76mm | 15.9mm |
| B102EEOL | NEMA® | 19.05mm | 120.65mm | 25.4mm | 6.35mm | 15.9mm |
| B102EFOL | NEMA® | 19.05mm | 120.65mm | 31.75mm | 6.35mm | 15.9mm |
| B102EGOL | NEMA® | 19.05mm | 120.65mm | 38.1mm | 6.35mm | 15.9mm |
| B102EHOL | NEMA® | 19.05mm | 127mm | 50.8mm | 6.35mm | 15.9mm |
| B103EEOL003 | Non-NEMA® | 19.05mm | 51.59mm | 25.4mm | 6.35mm | 11.1mm |
| B103EGOL001 | Non-NEMA® | 19.05mm | 92.08mm | 38.1mm | 6.35mm | 11.1mm |
| B102GGOL | NEMA® | 31.75mm | 149.23mm | 38.1mm | 9.53mm | 15.9mm |
| B102GHOL | NEMA® | 31.75mm | 149.23mm | 50.8mm | 9.53mm | 15.9mm |
| B102JHOL | NEMA® | 34.93mm | 149.23mm | 50.8mm | 12.7mm | 15.9mm |

Table 2/2

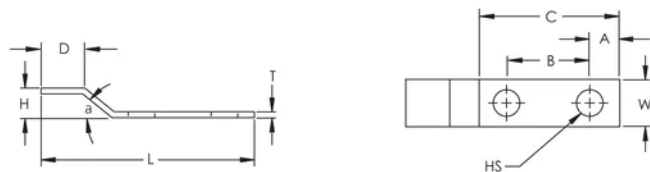
| Catalog Number | B | C | D | Hole Size (HS) | Angle (a) | Equivalent Conductor Size |
|----------------|---------|---------|---------|----------------|-----------|---------------------------|
| B103AAOL003 | 25.4mm | 57.15mm | 22.23mm | 6.35mm | 45° | 20.16mm ² |
| B102CEOL | 44.45mm | 76.2mm | 22.23mm | 14.29mm | 45° | 80.63mm ² |
| B102CEOL001 | 44.45mm | 76.2mm | 22.23mm | 7.94mm | 45° | 80.63mm ² |
| B102QQOL | 44.5mm | 76mm | 25.4mm | 14.2mm | 45° | 81mm ² |

| CatalogNumber | B | C | D | Hole Size (HS) | Angle (a) | Equivalent Conductor Size |
|---------------|---------|---------|---------|----------------|-----------|---------------------------|
| B103CEOL003 | 25.4mm | 49.02mm | 22.23mm | 11.11mm | 45° | 80.63mm ² |
| PBB102CEOL | 44.45mm | 76.2mm | 22.23mm | 14.29mm | 45° | 80.63mm ² |
| B102DEOL | 44.45mm | 76.2mm | 22.23mm | 14.29mm | 45° | 120.94mm ² |
| B103DEOL | 25.4mm | 49.02mm | 22.23mm | 11.11mm | 45° | 120.94mm ² |
| B102EEOL | 44.45mm | 76.2mm | 26.92mm | 14.29mm | 45° | 161.26mm ² |
| B102EFOL | 44.45mm | 76.2mm | 26.92mm | 14.29mm | 45° | 201.57mm ² |
| B102EGOL | 44.45mm | 76.2mm | 26.92mm | 14.29mm | 45° | 242mm ² |
| B102EHOL | 44.45mm | 76.2mm | 31.75mm | 14.29mm | 45° | 322.51mm ² |
| B103EEOL003 | 25.4mm | 51.59mm | 26.92mm | 11.11mm | 45° | 161.26mm ² |
| B103EGOL001 | 25.4mm | 50.8mm | 25.4mm | 11.11mm | 45° | 241.89mm ² |
| B102GGOL | 44.45mm | 82.55mm | 38.1mm | 14.29mm | 45° | 362.83mm ² |
| B102GHOL | 44.45mm | 82.55mm | 38.1mm | 14.29mm | 45° | 483.77mm ² |
| B102JHOL | 44.45mm | 82.55mm | 50.8mm | 14.29mm | 45° | 645.03mm ² |

ADDITIONAL PRODUCT DETAILS

For sizes not listed, contact us.

DIAGRAMS



WARNING

nVent products shall be installed and used only as indicated in nVent's product instruction sheets and training materials. Instruction sheets are available at www.nvent.com and from your nVent customer service representative. Improper installation, misuse, misapplication or other failure to completely follow nVent's instructions and warnings may cause product malfunction, property damage, serious bodily injury and death and/or void your warranty.



Our powerful portfolio of brands:

CADDY ERICO HOFFMAN ILSCO SCHROFF TRACHTE