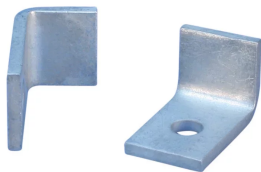


1 Hole Lug, 90°

Data Solutions



FEATURES

Provides an efficient bolting surface for grounding and power applications

Electrolytic grade copper

For use with nVent ERICO Cadweld type LA connections only

SPECIFICATIONS

Table 1/2

Catalog Number	Material	Finish	Height (H)	Length (L)	Width (W)	Thickness (T)
B101EG90	Copper	Tinned	39.62mm	47.5mm	38.1mm	6.35mm

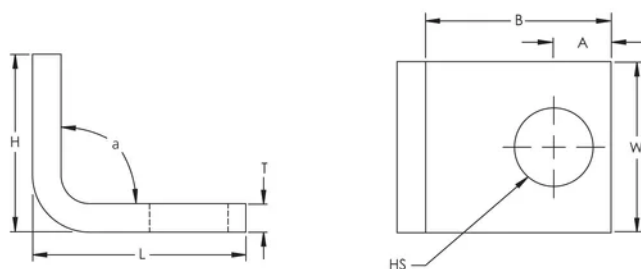
Table 2/2

Catalog Number	A	B	Hole Size (HS)	Angle (a)	Equivalent Conductor Size
B101EG90	12.7mm	41.28mm	17.46mm	90°	241.89mm ²

ADDITIONAL PRODUCT DETAILS

For sizes not listed, contact us.

DIAGRAMS



WARNING

nVent products shall be installed and used only as indicated in nVent's product instruction sheets and training materials. Instruction sheets are available at www.nvent.com and from your nVent customer service representative. Improper installation, misuse, misapplication or other failure to completely follow nVent's instructions and warnings may cause product malfunction, property damage, serious bodily injury and death and/or void your warranty.



Our powerful portfolio of brands:

CADDY ERICO HOFFMAN ILSCO SCHROFF TRACHTE