

# nVent ERIFLEX Flexbus Firestop Block FBB



## CERTIFICATIONS



## FEATURES

Highly-elastic moldable block

Easy access for difficult-to-reach openings

Age, smoke and damp resistant

Re-enterable and repairable

Excellent adhesion

No backing material required

F-rating / E-rating up to 2 hours

T-rating / I-rating up to 2 hours

## SPECIFICATIONS

- Color:** Red;Brown
- Width (W):** 450 mm Max
- Height (H):** 500 mm Max

Table 1/2

Catalog Number	Article Number	A	B	C	Complies With	Density

<b>FLEXFIREBLOC K</b>	508151	200 mm	144 mm	60 mm	EN 13501-1, EN 1366-3	240 - 300 kg/m <sup>3</sup>
<b>FLEXFIREBLOC KUL</b>	508154	200 mm	130 mm	60 mm	ASTM E 84 (UL 723), ASTM E 814 (UL 1479)	

Table 2/2

Catalog Number	Article Number	Flammability Rating	Unit Weight	Certifications
<b>FLEXFIREBLOCK</b>	508151	DIN 4102 (B2)	0.56 kg	CE, RoHS, ESTI ERIFLEX FleXbus, FBS-EN
<b>FLEXFIREBLOCKUL</b>	508154		0.56 kg	ESTI ERIFLEX FleXbus, cULus Classified, CE, RoHS

## ADDITIONAL PRODUCT DETAILS

The thickness of the penetration seal has to be minimum 200mm, depending on the fire resistance classification (see Annex J-1 of the ETA) in order to obtain EI120 fire-resistance.

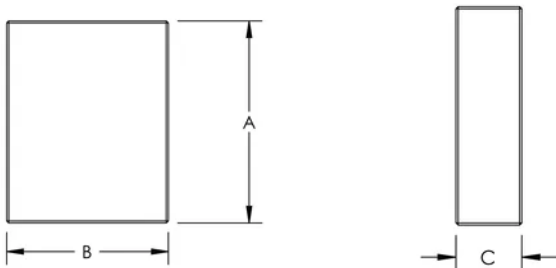
If 200mm is not possible, the FIB (intumescent wrap) needs to be used around the FleXbus Conductors and with 150mm width on both sides in order to reach EI120 fire resistance.

The width and height is referring to the maximum opening size of the penetration seal.

The total cross section of the installation (including insulation and conductor) must not be more than 60% of the opening size of the penetration seal.

The first support for the FleXbus Conductor has to be at a maximum 200mm measured from the surface of the penetration seal.

## DIAGRAMS



## WARNING

nVent products shall be installed and used only as indicated in nVent's product instruction sheets and training materials. Instruction sheets are available at [www.nvent.com](http://www.nvent.com) and from your nVent customer service representative. Improper installation, misuse, misapplication or other failure to completely follow nVent's instructions and warnings may cause product malfunction, property damage, serious bodily injury and death and/or void your warranty.

**North America**

+1.800.753.9221

Option 1 – Customer Care

Option 2 – Technical

Support

**Europe**

Netherlands:

+31 800-0200135

France:

+33 800 901 793

**Europe**

Germany:

800 1890272

Other Countries:

+31 13 5835404

**APAC**

Shanghai:

+ 86 21 2412 1618/19

Sydney:

+61 2 9751 8500



Our powerful portfolio of brands:

**CADDY**

**ERICO**

**HOFFMAN**

**ILSCO**

**SCHROFF**

**TRACHTE**