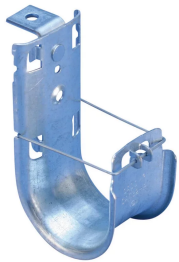


# nVent CADDY Cat HP J-Hook with Angle Bracket



## CERTIFICATIONS



## FEATURES

Ideal for attaching to concrete, steel or wood surfaces

Provides optimal support for high-performance data cable, up to and including Cat 5e, Cat 6, Cat 6A, Cat 7 and fibre optic

Provides superior fill capacity and load rating over most other non-continuous cable support alternatives

Rounded edges on J-Hooks provide proper bend radius support for high performance data cables

Cost effective alternative to expensive cable tray

Complies with EN 50174-2

Meets ISO®/IEC 14763-2, ANSI®/TIA 568 and ANSI®/TIA 569

## SPECIFICATIONS

**Finish:** Pregalvanized

**Material:** Steel

Table 1/2

Catalog Number	Article Number	Diameter (Ø)	Area	Cable Capacity, Cat 5e	Cable Capacity, Cat 6	Cable Capacity, Cat 6A
----------------	----------------	--------------	------	------------------------	-----------------------	------------------------

CAT21HPAB	181189	33.3 mm	1174mm <sup>2</sup>	50	40	25
CAT32HPAB	181211	50 mm	2561mm <sup>2</sup>	90	60	35
CAT16HPAB	181209	25 mm	690mm <sup>2</sup>	20	15	10
CAT64HPAB	181024	100 mm	9987mm <sup>2</sup>	330	220	140
CAT48HPAB	181212	75 mm	5974mm <sup>2</sup>	200	150	80

Table 2/2

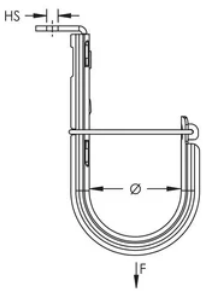
Catalog Number	Article Number	Hole Size (HS)	Static Load
CAT21HPAB	181189	6.3 mm	270N
CAT32HPAB	181211	6.3 mm	270N
CAT16HPAB	181209	6.3 mm	270N
CAT64HPAB	181024	6.3 mm	270N
CAT48HPAB	181212	6.3 mm	270N

## ADDITIONAL PRODUCT DETAILS

Non-continuous supports may not exceed spacing of 5' (1.5 m) per TIA 569-C.9.7 and EN 50174-2.

Cable capacity is calculated based on a 70% fill rate.

## DIAGRAMS



## WARNING

---

nVent products shall be installed and used only as indicated in nVent's product instruction sheets and training materials. Instruction sheets are available at [www.nvent.com](http://www.nvent.com) and from your nVent customer service representative. Improper installation, misuse, misapplication or other failure to completely follow nVent's instructions and warnings may cause product malfunction, property damage, serious bodily injury and death and/or void your warranty.

### North America

+1.800.753.9221

Option 1 – Customer Care

Option 2 – Technical

Support

### Europe

Netherlands:

+31 800-0200135

France:

+33 800 901 793

### Europe

Germany:

800 1890272

Other Countries:

+31 13 5835404

### APAC

Shanghai:

+ 86 21 2412 1618/19

Sydney:

+61 2 9751 8500



Our powerful portfolio of brands:

**CADDY**

**ERICO**

**HOFFMAN**

**ILSCO**

**SCHROFF**

**TRACHTE**

