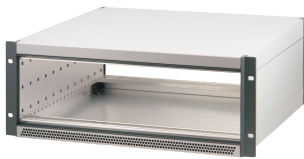


# RatiopacPRO AIR 19" Rack Mount Case, Retrofittable Shielding



The nVent SCHROFF RatiopacPRO case provides electronics protection for 19" and individual electronic assemblies. This flexible and robust case is simple to convert from desktop to a 19" rack mount case and includes four different style options. This version of the case provides advanced cooling capabilities and mounting brackets for assembly into a 19" rack.

## CERTIFICATIONS



## FEATURES

Cases for individual assembly with 19" standard components or specific internal mounting, e.g. with mounting plate

Retrofittable EMC shielding

Version with 19" mounting brackets, no visible screws

The case has 2 x 1/2 U clearances for ventilation beneath and above the board cage

For board depth 160 mm, 220 mm, 280 mm, and 340 mm (depending on case depth)

Symmetrical design, identical front and rear side

Conforms with DIN EN 62368-1

## SPECIFICATIONS

<b>Static Load:</b>	25kg
<b>Rack Width:</b>	84HP
<b>Product Type:</b>	Case
<b>Type:</b>	Case for Individual Electronic Components
<b>EMC Shielding:</b>	No (Retrofittable)
<b>Product Family:</b>	RatiopacPRO AIR

Table 1/3

Catalog Number	Rack Height	Depth	Package Quantity	Usable Height	Usable Width	Front Frame Construction
24571-582	3U	255.5mm	1	112.3mm	432mm	19" Mounting Brackets, Horizontal Rails
24571-585	3U	315.5mm	1	112.3mm	432mm	19" Mounting Brackets, Horizontal Rails
24571-586	3U	375.5mm	1	112.3mm	432mm	19" Mounting Brackets, Horizontal Rails
24571-587	3U	435.5mm	1	112.3mm	432mm	19" Mounting Brackets, Horizontal Rails
24571-588	3U	495.5mm	1	112.3mm	432mm	19" Mounting Brackets, Horizontal Rails
24571-630	4U	255.5mm	1	156.8mm	432mm	19" Mounting Brackets, Horizontal Rails
24571-633	4U	315.5mm	1	156.8mm	432mm	19" Mounting Brackets, Horizontal Rails
24571-634	4U	375.5mm	1	156.8mm	432mm	19" Mounting Brackets, Horizontal Rails
24571-635	4U	435.5mm	1	156.8mm	432mm	19" Mounting Brackets, Horizontal Rails
24571-636	4U	495.5mm	1	156.8mm	432mm	19" Mounting Brackets, Horizontal Rails
24571-678	6U	255.5mm	1	245.7mm	432mm	19" Mounting Brackets, Horizontal Rails
24571-681	6U	315.5mm	1	245.7mm	432mm	19" Mounting Brackets, Horizontal Rails
24571-682	6U	375.5mm	1	245.7mm	432mm	19" Mounting Brackets, Horizontal Rails
24571-683	6U	435.5mm	1	245.7mm	432mm	19" Mounting Brackets, Horizontal Rails

CatalogNumber	Rack Height	Depth	Package Quantity	Usable Height	Usable Width	Front Frame Construction
24571-684	6U	495.5mm	1	245.7mm	432mm	19" Mounting Brackets, Horizontal Rails

Table 2/3

Catalog Number	Cooling Option	Complies With	Finish	Height	Material	Protection Rating
24571-582	Yes	IEC 60297-3-101, IEC 60297-3-102, IEEE 1101.1, IEEE 1101.10, IEEE 1101.11	Passivated, Powder Coated	177mm	Aluminum	IP20
24571-585	Yes	IEC 60297-3-101, IEC 60297-3-102, IEEE 1101.1, IEEE 1101.10, IEEE 1101.11	Passivated, Powder Coated	177mm	Aluminum	IP20
24571-586	Yes	IEC 60297-3-101, IEC 60297-3-102, IEEE 1101.1, IEEE 1101.10, IEEE 1101.11	Passivated, Powder Coated	177mm	Aluminum	IP20
24571-587	Yes	IEC 60297-3-101, IEC 60297-3-102, IEEE 1101.1, IEEE 1101.10, IEEE 1101.11	Passivated, Powder Coated	177mm	Aluminum	IP20
24571-588	Yes	IEC 60297-3-101, IEC 60297-3-102, IEEE 1101.1, IEEE 1101.10, IEEE 1101.11	Passivated, Powder Coated	177mm	Aluminum	IP20
24571-630	Yes	IEC 60297-3-101, IEC 60297-3-102, IEEE 1101.1, IEEE 1101.10, IEEE 1101.11	Passivated, Powder Coated	221.5mm	Aluminum	IP20

CatalogNumber	Cooling Option	Complies With	Finish	Height	Material	Protection Rating
24571-633	Yes	IEC 60297-3-101, IEC 60297-3-102, IEEE 1101.1, IEEE 1101.10, IEEE 1101.11	Passivated, Powder Coated	221.5mm	Aluminum	IP20
24571-634	Yes	IEC 60297-3-101, IEC 60297-3-102, IEEE 1101.1, IEEE 1101.10, IEEE 1101.11	Passivated, Powder Coated	221.5mm	Aluminum	IP20
24571-635	Yes	IEC 60297-3-101, IEC 60297-3-102, IEEE 1101.1, IEEE 1101.10, IEEE 1101.11	Passivated, Powder Coated	221.5mm	Aluminum	IP20
24571-636	Yes	IEC 60297-3-101, IEC 60297-3-102, IEEE 1101.1, IEEE 1101.10, IEEE 1101.11	Passivated, Powder Coated	221.5mm	Aluminum	IP20
24571-678	Yes	IEC 60297-3-101, IEC 60297-3-102, IEEE 1101.1, IEEE 1101.10, IEEE 1101.11	Passivated, Powder Coated	310.35mm	Aluminum	IP20
24571-681	Yes	IEC 60297-3-101, IEC 60297-3-102, IEEE 1101.1, IEEE 1101.10, IEEE 1101.11	Passivated, Powder Coated	310.35mm	Aluminum	IP20
24571-682	Yes	IEC 60297-3-101, IEC 60297-3-102, IEEE 1101.1, IEEE 1101.10, IEEE 1101.11	Passivated, Powder Coated	310.35mm	Aluminum	IP20

CatalogNumber	Cooling Option	Complies With	Finish	Height	Material	Protection Rating
24571-683	Yes	IEC 60297-3-101, IEC 60297-3-102, IEEE 1101.1, IEEE 1101.10, IEEE 1101.11	Passivated, Powder Coated	310.35mm	Aluminum	IP20
24571-684	Yes	IEC 60297-3-101, IEC 60297-3-102, IEEE 1101.1, IEEE 1101.10, IEEE 1101.11	Passivated, Powder Coated	310.35mm	Aluminum	IP20

Table 3/3

Catalog Number	Width	Quick Ship
24571-582	448.9mm	No
24571-585	448.9mm	No
24571-586	448.9mm	No
24571-587	448.9mm	No
24571-588	448.9mm	No
24571-630	448.9mm	No
24571-633	448.9mm	No
24571-634	448.9mm	No
24571-635	448.9mm	No
24571-636	448.9mm	No
24571-678	448.9mm	No
24571-681	448.9mm	No

Catalog Number	Width	Quick Ship
24571-682	448.9mm	No
24571-683	448.9mm	No
24571-684	448.9mm	No

## ADDITIONAL PRODUCT DETAILS

Modifications (special colours or sizes).

Custom solutions (cut-outs in top cover, base plate or side panels).

Assembly service from 1 piece.

## WARNING

nVent products shall be installed and used only as indicated in nVent's product instruction sheets and training materials. Instruction sheets are available at [www.nvent.com](http://www.nvent.com) and from your nVent customer service representative. Improper installation, misuse, misapplication or other failure to completely follow nVent's instructions and warnings may cause product malfunction, property damage, serious bodily injury and death and/or void your warranty.

### North America

All locations  
+1.763.422.2661  
Chat with us:  
[nvent.com/schroff](http://nvent.com/schroff)

### Europe

Straubenhardt, Germany  
+49.7082.794.0  
Betschdorf, France  
+33.3.88.90.64.90  
Warsaw, Poland  
+48.22.209.98.35  
Assago, Italy  
+39.02.932.7141  
Chat with us:  
[nvent.com/schroff](http://nvent.com/schroff)

### Asia

Shanghai, China  
+86.21.2412.6943  
Qingdao, China  
+86.532.8771.6101  
Singapore  
+65.6768.5800  
Shin-Yokohama, Japan  
+81.45.476.0271  
Chat with us:  
[nvent.com/schroff](http://nvent.com/schroff)

### Middle East & India

Dubai, United Arab Emirates  
+971.4.378.1700  
Bangalore, India  
+91.80.6715.2001  
Istanbul, Turkey  
+90.216.250.7374  
Chat with us:  
[nvent.com/schroff](http://nvent.com/schroff)



Our powerful portfolio of brands:

**CADDY ERICO HOFFMAN ILSCO SCHROFF TRACHTE**