

# One-Piece Flange Coupler



One-piece flange couplers are ideal for eliminating protruding dowel bars in segmental pour applications. The flange side of the coupler is typically tack or seal welded to cast-in-place structural steel walls commonly found in most modern nuclear reactor designs.

## FEATURES

Designed to splice the same diameter bars where the second bar can be rotated and is not restricted in its axial direction

Tack welding allows the coupler to be used for positioning of a bent bar on the first bar

Installs quickly and easily

## SPECIFICATIONS

**Finish:** Plain

**Material:** Steel

Table 1/2

Catalog Number	Rebar Size, Metric	Rebar Size, US	Rebar Size, Canada	Diameter 1 (Ø1)	Diameter 2 (Ø2)	Length 1 (L1)
EL16SANSP004	16 mm	#5	15M	40 mm	25 mm	56 mm
EL18SANSP004	18 mm			40 mm	25 mm	62 mm
EL20SANSP004	20 mm	#6	20M	45 mm	29 mm	71 mm
EL22SANSP004	22 mm	#7		45 mm	32 mm	80 mm
EL25SANSP004	25 mm	#8	25M	50 mm	35 mm	85 mm

CatalogNumber	Rebar Size, Metric	Rebar Size, US	Rebar Size, Canada	Diameter 1(Ø1)	Diameter 2(Ø2)	Length 1 (L1)
EL28SANSP004	28 mm	#9	30M	50 mm	38 mm	91 mm
EL36SANSP004	36 mm	#11	35M	60 mm	48 mm	101 mm
EL32SANSP004	32 mm	#10		60 mm	45 mm	96 mm
EL40SANSP004	40 mm			70 mm	57 mm	127 mm

Table 2/2

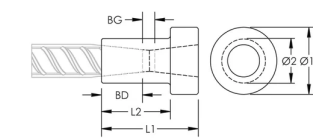
Catalog Number	Length 2 (L2)	Bar Depth (BD)	Bar Gap (BG)	Unit Weight
EL16SANSP004	40 mm	22mm	12mm	0.23 kg
EL18SANSP004	46 mm	24mm	14mm	0.23 kg
EL20SANSP004	55 mm	28mm	16mm	0.32 kg
EL22SANSP004	64 mm	32mm	16mm	0.41 kg
EL25SANSP004	69 mm	34mm	16mm	0.48 kg
EL28SANSP004	75 mm	38mm	16mm	0.57 kg
EL36SANSP004	85 mm	43mm	16mm	0.91 kg
EL32SANSP004	80 mm	40mm	16mm	0.8 kg
EL40SANSP004	111 mm	55mm	17mm	1.67 kg

**Designed to Meet:** AASHTO;ABNT NBR 8548:1984;ACI 318 Type 1 (125% Specified Yield);ACI 318 Type 2 (Specified Tensile);ACI 349;ACI 359;AS3600

## ADDITIONAL PRODUCT DETAILS

Bar dimensions and weights listed may vary by region. Coupler sizes not shown may be available by special order. Contact your nVent LENTON representative for more information.

DIAGRAMS



WARNING

nVent products shall be installed and used only as indicated in nVent's product instruction sheets and training materials. Instruction sheets are available at [www.nvent.com](http://www.nvent.com) and from your nVent customer service representative. Improper installation, misuse, misapplication or other failure to completely follow nVent's instructions and warnings may cause product malfunction, property damage, serious bodily injury and death and/or void your warranty.

North America

+1.800.753.9221  
Option 1 – Customer Care  
Option 2 – Technical  
Support

Europe

Netherlands:  
+31 800-0200135  
France:  
+33 800 901 793

Europe

Germany:  
800 1890272  
Other Countries:  
+31 13 5835404

APAC

Shanghai:  
+ 86 21 2412 1618/19  
Sydney:  
+61 2 9751 8500



Our powerful portfolio of brands:

CADDY   ERICO   HOFFMAN   ILSCO   SCHROFF   TRACHTE