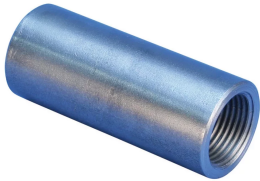


A32K Standard Coupler, High Strength, Corrosion Resistant, Plain



The A32K family of standard couplers is designed for use on ChromX® 2000, 4000 and 9000 Series reinforcing steels. The couplers are produced from ChromX 9000 Series steel which is manufactured to the ASTM A1035 specification. The ChromX 9000 material specification provides for a ductile, high strength coupler that has improved corrosion resistance.

FEATURES

Designed to splice the same diameter bars where one bar can be rotated and the bar is not restricted in its axial direction

Slim design reduces concrete cover

Installs quickly and easily

ChromX® 9000 material specifications provide for a unique combination of strength and corrosion resistance

SPECIFICATIONS

Material: ASTM A1035 Steel

Finish: Plain

100% U.S. Domestic Content: Yes

Table 1/2

Catalog Number	Rebar Size, Metric	Rebar Size, US	Rebar Size, Canada	Diameter (Ø)	Length (L)	Bar Depth (BD)
EL12A32K	12 mm	#4	10M	25 mm	50mm	19mm
EL16A32K	16 mm	#5	15M	25 mm	61mm	24mm
EL22A32K	22 mm	#7		32 mm	91mm	37mm
EL20A32K	20 mm	#6	20M	32 mm	87mm	35mm

CatalogNumber	Rebar Size, Metric	Rebar Size, US	Rebar Size, Canada	Diameter (Ø)	Length (L)	Bar Depth (BD)
EL28A32K	28 mm	#9	30M	38 mm	101mm	42mm
EL25A32K	25 mm	#8	25M	38 mm	97mm	40mm
EL32A32K	32 mm	#10		44 mm	108mm	45mm
EL40A32K	40 mm			57 mm	131mm	57mm
EL36A32K	36 mm	#11	35M	51 mm	121mm	52mm
EL43TA32K	43 mm	#14	45M	57 mm	158mm	66mm

Table 2/2		
Catalog Number	Bar Gap (BG)	Unit Weight
EL12A32K	12mm	0.16 kg
EL16A32K	13mm	0.17 kg
EL22A32K	17mm	0.35 kg
EL20A32K	17mm	0.37 kg
EL28A32K	17mm	0.5 kg
EL25A32K	17mm	0.56 kg
EL32A32K	18mm	0.74 kg
EL40A32K	17mm	1.57 kg
EL36A32K	17mm	1.13 kg
EL43TA32K	26mm	1.7 kg

Designed to Meet:

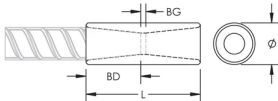
AASHTO;ABNT NBR 8548:1984;ACI 318 Type 1 (125% Specified Yield);ACI 318 Type 2 (Specified Tensile);ACI 349;ACI 359;AS3600

ADDITIONAL PRODUCT DETAILS

Bar dimensions and weights listed may vary by region. Coupler sizes not shown may be available by special order. Contact your nVent LENTON representative for more information.

ChromX® is a registered trademark of MMFX® Steel Corporation.

DIAGRAMS



WARNING

nVent products shall be installed and used only as indicated in nVent's product instruction sheets and training materials. Instruction sheets are available at www.nvent.com and from your nVent customer service representative. Improper installation, misuse, misapplication or other failure to completely follow nVent's instructions and warnings may cause product malfunction, property damage, serious bodily injury and death and/or void your warranty.

North America	Europe	Europe	APAC
+1.800.753.9221	Netherlands:	Germany:	Shanghai:
Option 1 – Customer Care	+31 800-0200135	800 1890272	+ 86 21 2412 1618/19
Option 2 – Technical	France:	Other Countries:	Sydney:
Support	+33 800 901 793	+31 13 5835404	+61 2 9751 8500



Our powerful portfolio of brands:

CADDY ERICO HOFFMAN ILSCO SCHROFF TRACHTE