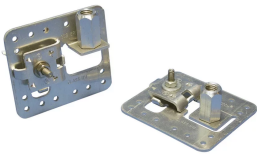


# Air Terminal Base, Stamped Adjustable, Imperial Thread



## CERTIFICATIONS



## FEATURES

For use on flat, vertical or sloping surfaces

Air terminal support tab is field adjustable, eliminating the need for swivel adaptors

Available pre-configured for vertical applications

Install with adhesive or screw down fixings

Positive single bolt tension for multi-directional cable clamping

## SPECIFICATIONS

**Conductor Size, UL:** Class 1 - Class 2 (4/0 Max)

Table 1/2

Catalog Number	Material	Finish	Thread Size (TS)	Type	Hole Size (HS)	Depth (D)
LPA30212	Aluminum		1/2" UNC	Flat	7.14 mm	88.9mm

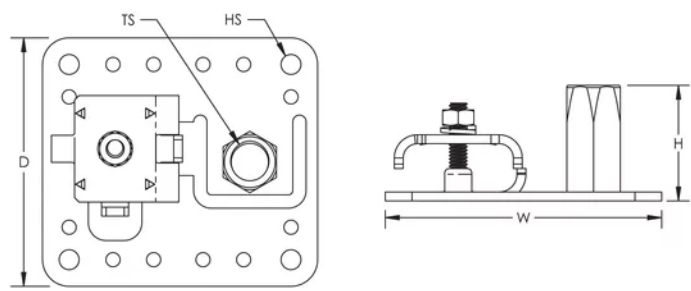
CatalogNumber	Material	Finish	Thread Size (TS)	Type	Hole Size (HS)	Depth (D)
LPA30258	Aluminum		5/8" UNC	Flat	7.14 mm	88.9mm
LPC30212	Bronze, Brass		1/2" UNC	Flat	7.14 mm	88.9mm
LPC30258	Bronze, Brass		5/8" UNC	Flat	7.14 mm	88.9mm
LPC30258V	Bronze, Brass		5/8" UNC	Vertical	7.14 mm	88.9mm
LPC302L58	Bronze, Brass	Tinned	5/8" UNC	Flat	7.14 mm	88.9mm
LPC302M16	Bronze, Brass		M16	Flat	7.14 mm	88.9mm

Table 2/2		
Catalog Number	Height (H)	Width (W)
LPA30212	34.92 mm	101.6 mm
LPA30258	34.92 mm	101.6 mm
LPC30212	34.92 mm	101.6 mm
LPC30258	34.92 mm	101.6 mm
LPC30258V	34.92 mm	101.6 mm
LPC302L58	34.92 mm	101.6 mm
LPC302M16	34.92 mm	101.6 mm

## ADDITIONAL PRODUCT DETAILS

Vertical type bases are factory pre-configured for vertical mount applications.

DIAGRAMS



WARNING

nVent products shall be installed and used only as indicated in nVent's product instruction sheets and training materials. Instruction sheets are available at [www.nvent.com](http://www.nvent.com) and from your nVent customer service representative. Improper installation, misuse, misapplication or other failure to completely follow nVent's instructions and warnings may cause product malfunction, property damage, serious bodily injury and death and/or void your warranty.

**⚠ WARNING:** This product can expose you to chemicals including lead, which is known to the State of California to cause cancer and birth defects or other reproductive harm. For more information go to [www.P65Warnings.ca.gov](http://www.P65Warnings.ca.gov).

North America

+1.800.753.9221  
Option 1 – Customer Care  
Option 2 – Technical  
Support

Europe

Netherlands:  
+31 800-0200135  
France:  
+33 800 901 793

Europe

Germany:  
800 1890272  
Other Countries:  
+31 13 5835404

APAC

Shanghai:  
+ 86 21 2412 1618/19  
Sydney:  
+61 2 9751 8500



Our powerful portfolio of brands:

CADDY   ERICO   HOFFMAN   ILSCO   SCHROFF   TRACHTE