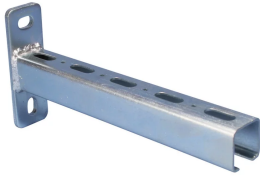


# Cantilever Arm with E3 Channel



## CERTIFICATIONS



## FEATURES

Perforated, cold rolled

Slotted backplate

## SPECIFICATIONS

**Finish:** Pregalvanized

**Material:** Steel

Table 1/1

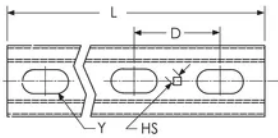
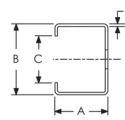
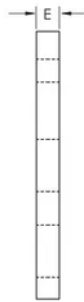
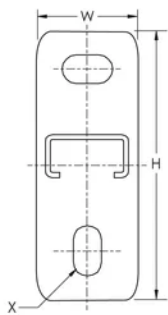
Catalog Number	Article Number	Length (L)
CE320H0750EG	585880	750mm
CE320H0500EG	585870	500mm
CE320H0250EG	585860	250mm

**Thickness (T):** 2 mm

<b>Hole Size (HS):</b>	5 mm
<b>E:</b>	6 mm
<b>X:</b>	11 x 18 mm
<b>Y:</b>	11 x 27 mm
<b>C:</b>	15.5 mm
<b>A:</b>	35 mm
<b>B:</b>	35 mm
<b>Width (W):</b>	40 mm
<b>D:</b>	50 mm
<b>Height (H):</b>	120 mm

## DIAGRAMS

---



## WARNING

---

nVent products shall be installed and used only as indicated in nVent's product instruction sheets and training materials. Instruction sheets are available at [www.nvent.com](http://www.nvent.com) and from your nVent customer service representative. Improper installation, misuse, misapplication or other failure to completely follow nVent's instructions and warnings may cause product malfunction, property damage, serious bodily injury and death and/or void your warranty.

**North America**

+1.800.753.9221

Option 1 – Customer Care

Option 2 – Technical

Support

**Europe**

Netherlands:

+31 800-0200135

France:

+33 800 901 793

**Europe**

Germany:

800 1890272

Other Countries:

+31 13 5835404

**APAC**

Shanghai:

+ 86 21 2412 1618/19

Sydney:

+61 2 9751 8500



Our powerful portfolio of brands:

**CADDY**

**ERICO**

**HOFFMAN**

**ILSCO**

**SCHROFF**

**TRACHTE**

