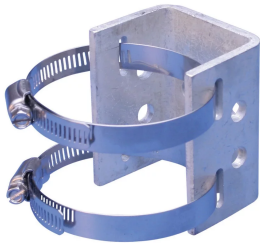


# Grounding Standoff for Telecom Towers



Most equipment on a telecommunication tower is grounded by connecting a copper conductor to a ground bar mounted to the tower itself. The lead length of the conductor is often extensive, which can add resistance to the grounding system.

The Grounding Standoff for Telecom Towers offers a direct, low-impedance electrical ground connection to the tower. Due to its compact size and unique direct-mounting feature, it can be installed close to amplifiers, antennas and other equipment.

## FEATURES

Provides a direct, low-impedance electrical ground connection to the tower

Offers a quick installation process

Compact design fits in tight and confined locations

Available in tinned copper to reduce dissimilar metal issues

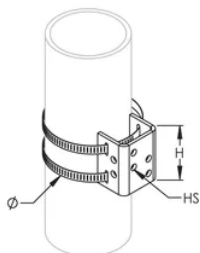
6 TIA double-hole lug attachment points

## SPECIFICATIONS

Table 1/1

Catalog Number	Material	Finish	Height (H)	Hole Size (HS)
ETMAGS	Copper, Stainless Steel 301 (EN 1.4310)	Tinned	76.2 mm	9.5 mm

## DIAGRAMS



**WARNING**

nVent products shall be installed and used only as indicated in nVent's product instruction sheets and training materials. Instruction sheets are available at [www.nvent.com](http://www.nvent.com) and from your nVent customer service representative. Improper installation, misuse, misapplication or other failure to completely follow nVent's instructions and warnings may cause product malfunction, property damage, serious bodily injury and death and/or void your warranty.

**North America**

+1.800.753.9221  
Option 1 – Customer Care  
Option 2 – Technical  
Support

**Europe**

Netherlands:  
+31 800-0200135  
France:  
+33 800 901 793

**Europe**

Germany:  
800 1890272  
Other Countries:  
+31 13 5835404

**APAC**

Shanghai:  
+ 86 21 2412 1618/19  
Sydney:  
+61 2 9751 8500



Our powerful portfolio of brands:

**CADDY   ERICO   HOFFMAN   ILSCO   SCHROFF   TRACHTE**