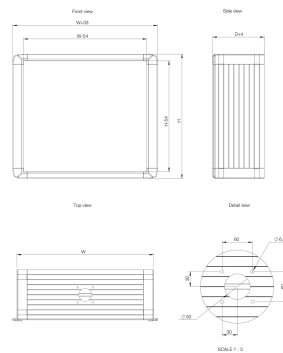
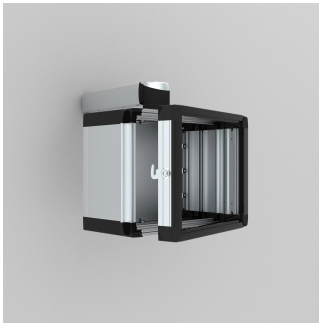


## Oicp Panel With Door Extension Section, OIDES



The aluminium operator interface control enclosure with a hinged extension frame, OIDES, has a pre-machined hole pattern to allow for the desired fixation to a swing arm, plus a removable front plate at a IP 65 protection degree. The extension frame increases the panel depth by 55 mm. Components can be easily fitted thanks to the removable front plate, but will also be easily accessible by opening the hinged front extension frame. Side handles on the enclosure allow for easy movement of the enclosure into the desired working position. The aluminium body will dissipate more heat than a mild steel body, which may eliminate the need for additional ventilation.

## FEATURES

Description: OICP panel with hinged door extension profile. It increases the OICP panel depth in 55 mm. It has grid profiles in the door extension profile sides.

Material: Body and door extension profile: Al Mg Si05. Rear plate: Al Mg. Corners: Al Si12.

Protection: Complies with IP 65.

Finish: Body, door extension profile and rear plate: anodised aluminium. Corners: RAL 7016.

Pack quantity: OICP panel with rear plate, door extension profile, external hinges, and locking system.

## SPECIFICATIONS

**Material:** Aluminum  
**Color:** Anthracite Gray  
**Finish:** Powder Coated  
**Color Code:** RAL 7016

Table 1/1

Catalog Number	E-Number	Height	Width	Depth	Quick Ship
OIDES305205	2419908	309mm	525mm	55mm	No
OIDES343905	2419909	345mm	395mm	55mm	No
OIDES355205	2419910	354mm	525mm	55mm	No
OIDES395205	2419911	398mm	525mm	55mm	No
OIDES414705	2419912	415mm	470mm	55mm	No
OIDES495405	2419913	495mm	542mm	55mm	No

## WARNING

nVent products shall be installed and used only as indicated in nVent's product instruction sheets and training materials. Instruction sheets are available at [www.nvent.com](http://www.nvent.com) and from your nVent customer service representative. Improper installation, misuse, misapplication or other failure to completely follow nVent's instructions and warnings may cause product malfunction, property damage, serious bodily injury and death and/or void your warranty.



Our powerful portfolio of brands:

**CADDY   ERICO   HOFFMAN   ILSCO   SCHROFF   TRACHTE**