

# Modular Single Door, MCS



The mild steel single door combinable floor standing enclosure range, MCS, with a IP 55 protection degree, is available off the shelf in many different sizes. This enclosure range is well suited for many different applications. The risk for component failure, and with that unnecessary downtime, is eliminated as water and dust are prevented from entering the enclosure.

## INDUSTRY STANDARDS

UL 508A Listed; Type 12; File No. E61997

cUL Listed per CSA C22.2 No.0, No.0.4, No.14, No.94; Type 12; File No. E61997

NEMA/EEMAC Type 12

CSA, File No. 1442951: Type 12

IEC 62208 IP55

CE, UK CA, UL, DNV, EAC

## FEATURES

**Material:** Frame: 1.5 mm painted steel. Door: 2 mm painted steel. Rear, roof and side panels: 1.5 mm painted steel. Mounting plate: 3 mm galvanized steel. Bottom plates: 1 mm galvanized steel.

**Frame:** Seam welded reversed open profiles with 25 mm hole pattern, according to DIN 43660. Including integrated external hole pattern.

**Door:** Mounted with four hinges allowing left or right hand opening. Including door frame with 25 mm hole pattern.

**Rear panel:** Fitted by M6 torx screws. Standard facilities for rear door mounting. RD version comes with rear door instead of rear panel.

**Side panels:** Supplied as an accessory.

**Roof panel:** Removable.

**Lock:** Espagnolette 4-point locking system. Does not interfere with the enclosure inner space. Standard double-bit lock with 3 mm insert. Standard inserts, cylinders, lift handles and T-handles are available as accessories.

**Bottom plates:** Consists of three or four (D>600) pieces.

**Mounting plate:** Double folded and slides into position. Adjustable in depth by steps of 25 mm, with the MPD02 accessory. Supplied, attached on the outside of the enclosure packaging.

**Earthing:** All panels are earthed through their fittings and are equipped with a separate earthing stud.

**Finish:** RAL 7035 structured powder coating.

**Protection:** Complies with IP 55 | TYPE 12 | IK 10.

**Mounting requirements:** Standard delivery ready for combined installation. For stand-alone installation add side panels.

Delivery: Frame with fitted door, rear panel, roof panel, bottom plates, mounting plate (not included for PER5 version) and door frame. For 400 mm wide enclosures, a mounting plate, bottom plates and door frame are not included. For enclosures 2200 mm height, delivery includes two CMB profiles mounted in depth. Delivery also includes earthing bolts. Delivered on a pallet which is identical to the width of the enclosure to allow baying without removal. All packing material is recyclable.

## SPECIFICATIONS

<b>Body Thickness:</b>	1.5mm
<b>Door Thickness:</b>	2mm
<b>Material:</b>	Mild Steel
<b>Finish:</b>	Powder Coated
<b>Color Code:</b>	RAL 7035

Table 1/1

Catalog Number	Article Number	E-Number	Height (H)	Width (W)	Depth (D)	Mounting Plate Included
MCS18044R5		2418000	1800mm	400mm	400mm	No
MCS18045R5		2418001	1800mm	400mm	500mm	No
MCS18046R5		2418002	1800mm	400mm	600mm	No
MCS18055PER5		2411597	1800mm	500mm	500mm	No
MCS18055R5		2411598	1800mm	500mm	500mm	Yes
MCS18064PER5		2418003	1800mm	600mm	400mm	No
MCS18064R5		2418004	1800mm	600mm	400mm	Yes
MCS18065PER5		2418005	1800mm	600mm	500mm	No
MCS18065R5		2418006	1800mm	600mm	500mm	Yes
MCS18066PER5		2411599	1800mm	600mm	600mm	No
MCS18066R5		2411600	1800mm	600mm	600mm	Yes
MCS18084PER5		2418007	1800mm	800mm	400mm	No
MCS18084R5		2418008	1800mm	800mm	400mm	Yes
MCS18085PER5		2418009	1800mm	800mm	500mm	No
MCS18085R5		2418010	1800mm	800mm	500mm	Yes
MCS18086PER5		2418011	1800mm	800mm	600mm	No

Catalog Number	Article Number	E-Number	Height (H)	Width (W)	Depth (D)	Mounting Plate Included
MCS18086R5		2418012	1800mm	800mm	600mm	Yes
MCS18104PER5		2418013	1800mm	1000mm	400mm	No
MCS18104R5		2418014	1800mm	1000mm	400mm	Yes
MCS18105PER5		2418015	1800mm	1000mm	500mm	No
MCS18105R5		2418016	1800mm	1000mm	500mm	Yes
MCS18106PER5		2411601	1800mm	1000mm	600mm	No
MCS18106R5		2411602	1800mm	1000mm	600mm	Yes
MCS20044R5		2418017	2000mm	400mm	400mm	No
MCS20045R5		2418018	2000mm	400mm	500mm	No
MCS20046R5		2418019	2000mm	400mm	600mm	No
MCS20048R5		2418020	2000mm	400mm	800mm	No
MCS20055PER5		2411603	2000mm	500mm	500mm	No
MCS20055R5		2411604	2000mm	500mm	500mm	Yes
MCS20064PER5		2418021	2000mm	600mm	400mm	No
MCS20064R5		2418022	2000mm	600mm	400mm	Yes
MCS20065PER5		2418023	2000mm	600mm	500mm	No
MCS20065R5		2418024	2000mm	600mm	500mm	Yes
MCS20066PER5		2418025	2000mm	600mm	600mm	No
MCS20066R5		2418026	2000mm	600mm	600mm	Yes
MCS20068PER5		2418027	2000mm	600mm	800mm	No

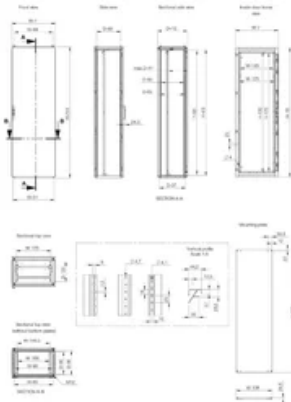
Catalog Number	Article Number	E-Number	Height (H)	Width (W)	Depth (D)	Mounting Plate Included
MCS20068PERDR5		2411605	2000mm	600mm	800mm	No
MCS20068R5		2418028	2000mm	600mm	800mm	Yes
MCS20068RDR5		2411606	2000mm	600mm	800mm	Yes
MCS200810PERDR5	MCS200810PERDR5	2411607	2000mm	800mm	1000mm	No
MCS200810RDR5		2411608	2000mm	800mm	1000mm	Yes
MCS20084PER5		2418031	2000mm	800mm	400mm	No
MCS20084R5		2418032	2000mm	800mm	400mm	Yes
MCS20085PER5		2418033	2000mm	800mm	500mm	No
MCS20085R5		2418034	2000mm	800mm	500mm	Yes
MCS20086PER5		2418035	2000mm	800mm	600mm	No
MCS20086PERDR5		2411610	2000mm	800mm	600mm	No
MCS20086R5		2418036	2000mm	800mm	600mm	Yes
MCS20086RDR5		2411611	2000mm	800mm	600mm	Yes
MCS20088PER5		2418037	2000mm	800mm	800mm	No
MCS20088PERDR5		2411612	2000mm	800mm	800mm	No
MCS20088R5		2418038	2000mm	800mm	800mm	Yes
MCS20088RDR5		2411613	2000mm	800mm	800mm	Yes
MCS20104PER5		2418039	2000mm	1000mm	400mm	No

Catalog Number	Article Number	E-Number	Height (H)	Width (W)	Depth (D)	Mounting Plate Included
MCS20104R5		2418040	2000mm	1000mm	400mm	Yes
MCS20105PER5		2418041	2000mm	1000mm	500mm	No
MCS20105R5		2418042	2000mm	1000mm	500mm	Yes
MCS20106PER5		2418043	2000mm	1000mm	600mm	No
MCS20106R5		2418044	2000mm	1000mm	600mm	Yes
MCS20108PER5		2418045	2000mm	1000mm	800mm	No
MCS20108PERD R5		2411614	2000mm	1000mm	800mm	No
MCS20108R5		2418046	2000mm	1000mm	800mm	Yes
MCS20108RDR5		2411615	2000mm	1000mm	800mm	Yes
MCS22066PER5	MCS22066PER5	2418047	2200mm	600mm	600mm	No
MCS22066R5	MCS22066R5	2418048	2200mm	600mm	600mm	Yes
MCS22068PER5	MCS22068PER5	2418049	2200mm	600mm	800mm	No
MCS22068R5	MCS22068R5	2418050	2200mm	600mm	800mm	Yes
MCS22086PER5	MCS22086PER5	2418051	2200mm	800mm	600mm	No
MCS22086R5	MCS22086R5	2418052	2200mm	800mm	600mm	Yes
MCS22088PER5		2418053	2200mm	800mm	800mm	No
MCS22088R5		2418054	2200mm	800mm	800mm	Yes
MCS14065PER5	MCS14065PER5		1400mm	600mm	500mm	No
MCS14065R5			1400mm	600mm	500mm	Yes

Catalog Number	Article Number	E-Number	Height (H)	Width (W)	Depth (D)	Mounting Plate Included
MCS14085R5			1400mm	800mm	500mm	Yes
MCS16065R5			1600mm	600mm	500mm	Yes
MCS16085R5			1600mm	800mm	500mm	Yes
MCS16065PER5	MCS16065PER5		1600mm	600mm	500mm	No
MCS16085PER5	MCS16085PER5		1600mm	800mm	500mm	No
MCS12065PER5			1200mm	600mm	500mm	No
MCS12065R5			1200mm	600mm	500mm	Yes
MCS12085PER5			1200mm	800mm	500mm	No
MCS12085R5			1200mm	800mm	500mm	Yes
MCS14085PER5	MCS14085PER5		1400mm	800mm	500mm	No
MCS180610PER5			1800mm	600mm	1000mm	No
MCS180610PERDR5			1800mm	600mm	1000mm	No
MCS180610R5			1800mm	600mm	1000mm	Yes
MCS180610RDR5			1800mm	600mm	1000mm	Yes
MCS180810PER5			1800mm	800mm	1000mm	No
MCS180810PERDR5			1800mm	800mm	1000mm	No
MCS180810R5			1800mm	800mm	1000mm	Yes

Catalog Number	Article Number	E-Number	Height (H)	Width (W)	Depth (D)	Mounting Plate Included
MCS180810RDR 5			1800mm	800mm	1000mm	Yes
MCS200610PER 5			2000mm	600mm	1000mm	No
MCS200610PER DR5			2000mm	600mm	1000mm	No
MCS200610R5			2000mm	600mm	1000mm	Yes
MCS200610RDR 5			2000mm	600mm	1000mm	Yes
MCS200810PER 5	MCS200810PER 5		2000mm	800mm	1000mm	No
MCS200810R5	MCS200810R5		2000mm	800mm	1000mm	Yes
MCS220610PER 5			2200mm	600mm	1000mm	No
MCS220610PER DR5			2200mm	600mm	1000mm	No
MCS220610R5			2200mm	600mm	1000mm	Yes
MCS220610RDR 5			2200mm	600mm	1000mm	Yes
MCS220810PER 5	MCS220810PER 5		2200mm	800mm	1000mm	No
MCS220810PER DR5			2200mm	800mm	1000mm	No
MCS220810R5	MCS220810R5		2200mm	800mm	1000mm	Yes
MCS220810RDR 5			2200mm	800mm	1000mm	Yes





Our powerful portfolio of brands:

CADDY   ERICO   HOFFMAN   ILSCO   SCHROFF   TRACHTE