

C-EC Cable to Strut Clamp



FEATURES

One-piece cable/conduit clamp with protective boot

No screws or bolts to drop

Requires only a screwdriver or nutdriver for installation

Fits into open side of strut channel

SPECIFICATIONS

Finish: Hot-Dip Galvanized

Material: Steel

Table 1/2

Catalog Number	Article Number	E-Number	Outer Diameter (OD)	Width (W)	Thickness (T)	Torque (TQ)
C12EC	337600	1341275	8 - 12 mm	20 mm	1.5 mm	2 N·m
C16EC	337610	1341276	12 - 16 mm	20 mm	1.5 mm	2 N·m
C20EC	337620	1341277	16 - 20 mm	20 mm	1.5 mm	2 N·m
C24EC	337630	1341278	20 - 24 mm	20 mm	1.5 mm	2 N·m
C28EC	337640	1341279	24 - 28 mm	20 mm	1.5 mm	2 N·m

CatalogNumber	Article Number	E-Number	Outer Diameter (OD)	Width (W)	Thickness (T)	Torque (TQ)
C32EC	337650	1341280	28 - 32 mm	25 mm	1.75 mm	2 N·m
C36EC	337660	1341281	32 - 36 mm	25 mm	1.75 mm	2 N·m
C40EC	337670	1341282	36 - 40 mm	25 mm	1.75 mm	2 N·m
C44EC	337680	1341283	40 - 44 mm	25 mm	2 mm	4 N·m
C48EC	337690	1341284	44 - 48 mm	25 mm	2 mm	4 N·m
C52EC	337700	1341285	48 - 52 mm	25 mm	2 mm	4 N·m
C56EC	337710	1341286	52 - 56 mm	25 mm	2 mm	4 N·m
C60EC	337720	1341287	56 - 60 mm	30 mm	2.25 mm	4 N·m
C64EC	337730	3535816	60 - 64 mm	30 mm	2.25 mm	4 N·m

Table 2/2

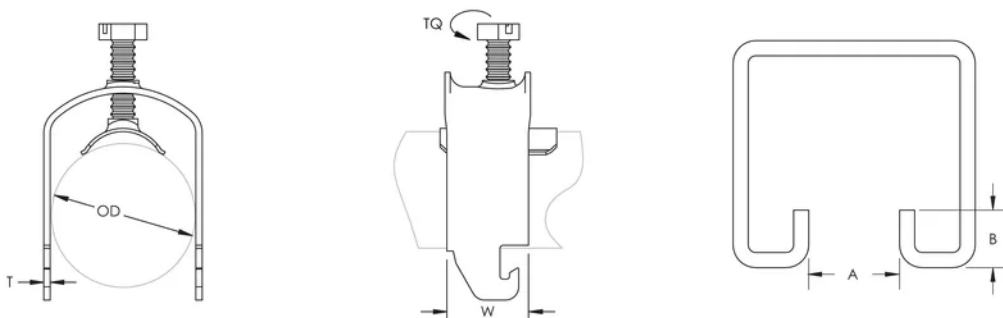
Catalog Number	Article Number	E-Number	A	B
C12EC	337600	1341275	18 mm Min	10 mm Max
C16EC	337610	1341276	18 mm Min	10 mm Max
C20EC	337620	1341277	18 mm Min	10 mm Max
C24EC	337630	1341278	18 mm Min	10 mm Max
C28EC	337640	1341279	18 mm Min	10 mm Max
C32EC	337650	1341280	18 mm Min	10 mm Max
C36EC	337660	1341281	18 mm Min	10 mm Max
C40EC	337670	1341282	18 mm Min	10 mm Max

Catalog Number	Article Number	E-Number	A	B
C44EC	337680	1341283	18 mm Min	10 mm Max
C48EC	337690	1341284	18 mm Min	10 mm Max
C52EC	337700	1341285	18 mm Min	10 mm Max
C56EC	337710	1341286	18 mm Min	10 mm Max
C60EC	337720	1341287	18 mm Min	10 mm Max
C64EC	337730	3535816	18 mm Min	10 mm Max

ADDITIONAL PRODUCT DETAILS

Screw is electrogalvanized on clamps that have an outer diameter of 40 mm or less.

DIAGRAMS



WARNING

nVent products shall be installed and used only as indicated in nVent's product instruction sheets and training materials. Instruction sheets are available at www.nvent.com and from your nVent customer service representative. Improper installation, misuse, misapplication or other failure to completely follow nVent's instructions and warnings may cause product malfunction, property damage, serious bodily injury and death and/or void your warranty.

North America

+1.800.753.9221

Option 1 – Customer Care

Option 2 – Technical

Support

Europe

Netherlands:

+31 800-0200135

France:

+33 800 901 793

Europe

Germany:

800 1890272

Other Countries:

+31 13 5835404

APAC

Shanghai:

+ 86 21 2412 1618/19

Sydney:

+61 2 9751 8500



Our powerful portfolio of brands:

CADDY

ERICO

HOFFMAN

ILSCO

SCHROFF

TRACHTE

