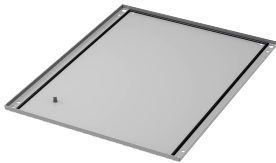


ProLine G2 Solid Base 0mm

ProLine G2 0-mm Solid Bases are used to close the bottom opening on an enclosure frame.



FEATURES

Castors or levelers can be used to attach the solid base, in place of the included hardware

Seamless polyurethane gasket (UL component recognized) provides a water-tight, dust-tight seal against moisture and contaminants

Includes four M12 hex bolts for installation

Solid Bases are finished with paint over plated surfaces

SPECIFICATIONS

Thickness: 1.52mm
Color: Light Gray
Color Code: RAL 7035

Table 1/1

Catalog Number	Article Number	Material	Finish	Quick Ship
P2B068	30961	Mild Steel	Powder Coated	No
P2B0185	32925	Mild Steel	Powder Coated	No
P2B066	30958	Mild Steel	Powder Coated	No
P2B0106	30908	Mild Steel	Powder Coated	No
P2B0168	32924	Mild Steel	Powder Coated	No
P2B066HF	30957	Mild Steel	Galvanized, Powder Coated	No
P2B0165	32922	Mild Steel	Powder Coated	No
P2B086	30966	Mild Steel	Powder Coated	No
P2B0106HF	30907	Mild Steel	Galvanized, Powder Coated	No
P2B0164	32918	Mild Steel	Powder Coated	No
P2B0166	32923	Mild Steel	Powder Coated	No
P2B0128	30935	Mild Steel	Powder Coated	No
P2B0108	30911	Mild Steel	Powder Coated	No
P2B0810	30962	Mild Steel	Powder Coated	No
P2B085	30964	Mild Steel	Powder Coated	No
P2B0126	30934	Mild Steel	Powder Coated	No
P2B0125	30933	Mild Steel	Powder Coated	No

Catalog Number	Article Number	Material	Finish	Quick Ship
P2B0124	30932	Mild Steel	Powder Coated	No
P2B084	30963	Mild Steel	Powder Coated	No
P2B064	30955	Mild Steel	Powder Coated	No
P2B046	30954	Mild Steel	Powder Coated	No
P2B045	30953	Mild Steel	Powder Coated	No
P2B088	30967	Mild Steel	Powder Coated	No
P2B0104	30905	Mild Steel	Powder Coated	No
P2B065	30956	Mild Steel	Powder Coated	No
P2B0188	32927	Mild Steel	Powder Coated	No
P2B0186	32926	Mild Steel	Powder Coated	No
P2B086HF	30965	Mild Steel	Galvanized, Powder Coated	No
P2B0105	30906	Mild Steel	Powder Coated	No

WARNING

nVent products shall be installed and used only as indicated in nVent's product instruction sheets and training materials. Instruction sheets are available at www.nvent.com and from your nVent customer service representative. Improper installation, misuse, misapplication or other failure to completely follow nVent's instructions and warnings may cause product malfunction, property damage, serious bodily injury and death and/or void your warranty.



Our powerful portfolio of brands:

CADDY ERICO HOFFMAN ILSCO SCHROFF TRACHTE