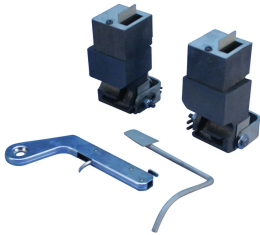


Joint Bond Mold Pair with Mounting Parts and Clips, Signal



FEATURES

Pair of replacement molds with mounting parts designed for the installation of jumper bonds to the head of the rail

Connection is made within the confines of the splice bar

Includes mold cleaner and flint ignitor

SPECIFICATIONS

Rail Type: 85 lb to 141 lb T-Rail Sections

Material: Steel;Graphite

Product: Mold, frames, and clips

Table 1/1

Catalog Number	Article Number	Bond Terminal Style	Conductor Size	Conductor Outer Diameter, Nominal	Welder Style
SBM456F		3/4" XS	3/16" Bondstrand	4.76mm	T6, T7
SBS925F		Head Free	3/16" Bondstrand	4.76mm	T6, T7
SBS5838F	165171	3/4" Tab	3/16" Bondstrand	4.76mm	T6, T7
SBS898F		1" Tab	5/16" Bondstrand	7.94mm	T6, T7

WARNING

nVent products shall be installed and used only as indicated in nVent's product instruction sheets and training materials. Instruction sheets are available at www.nvent.com and from your nVent customer service representative. Improper installation, misuse, misapplication or other failure to completely follow nVent's instructions and warnings may cause product malfunction, property damage, serious bodily injury and death and/or void your warranty.

⚠ WARNING: This product can expose you to chemicals including diisononyl phthalate, which is known to the State of California to cause cancer. For more information go to www.P65Warnings.ca.gov.

North America

+1.800.753.9221

Option 1 – Customer Care

Option 2 – Technical

Support

Europe

Netherlands:

+31 800-0200135

France:

+33 800 901 793

Europe

Germany:

800 1890272

Other Countries:

+31 13 5835404

APAC

Shanghai:

+ 86 21 2412 1618/19

Sydney:

+61 2 9751 8500



Our powerful portfolio of brands:

CADDY

ERICO

HOFFMAN

ILSCO

SCHROFF

TRACHTE