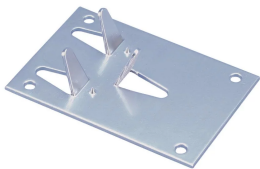


Crimp Bonding Plate



CERTIFICATIONS



FEATURES

Compression type fingers crimp over cable for direct contact

SPECIFICATIONS

Conductor Size, UL: Class 1

Table 1/2

Catalog Number	Material	Finish	Contact Area	Depth (D)	Height (H)	Width (W)
LPA535	Aluminum		19.35 cm ² Min	68.8mm	2.54 mm	63.5 mm
LPA533	Aluminum		51.61 cm ² Min	88.65mm	2.54 mm	63.5 mm
LPC533	Copper		51.61 cm ² Min	88.65mm	1.62 mm	63.5 mm
LPC533L	Copper	Tinned	51.61 cm ² Min	88.65mm	1.62 mm	63.5 mm

CatalogNumber	Material	Finish	Contact Area	Depth (D)	Height (H)	Width (W)
LPC535	Copper		19.35 cm ² Min	68.8mm	2.54 mm	63.5 mm
LPC535L	Copper	Tinned	19.35 cm ² Min	68.8mm	2.54 mm	63.5 mm

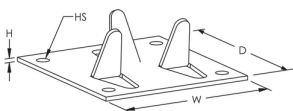
Table 2/2

Catalog Number	Hole Size (HS)	Unit Weight
LPA535	5.08 mm	0.03 kg
LPA533	5.08 mm	0.04 kg
LPC533	5.08 mm	0.08 kg
LPC533L	5.08 mm	0.08 kg
LPC535	5.08 mm	0.06 kg
LPC535L	5.08 mm	0.06 kg

ADDITIONAL PRODUCT DETAILS

Bonding plates are required to have a minimum of 3 in² (1,935 mm²) of contact area. When the structural steel is to be used as the primary down conductor for the lightning protection system 8 in² (5,161 mm²) of contact area is required.

DIAGRAMS



WARNING

nVent products shall be installed and used only as indicated in nVent's product instruction sheets and training materials. Instruction sheets are available at www.nvent.com and from your nVent customer service representative. Improper installation, misuse, misapplication or other failure to completely follow nVent's instructions and warnings may cause product malfunction, property damage, serious bodily injury and death and/or void your warranty.

North America

+1.800.753.9221

Option 1 – Customer Care

Option 2 – Technical

Support

Europe

Netherlands:

+31 800-0200135

France:

+33 800 901 793

Europe

Germany:

800 1890272

Other Countries:

+31 13 5835404

APAC

Shanghai:

+ 86 21 2412 1618/19

Sydney:

+61 2 9751 8500



Our powerful portfolio of brands:

CADDY

ERICO

HOFFMAN

ILSCO

SCHROFF

TRACHTE