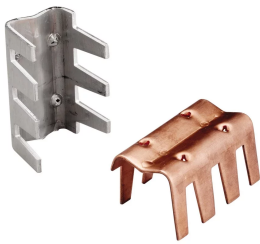
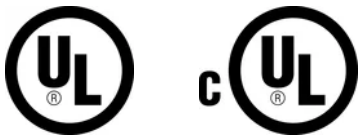


Stamped Crimp Parallel Cable Connector

Data Solutions



CERTIFICATIONS



FEATURES

Connector with compression type fingers to crimp over cable

SPECIFICATIONS

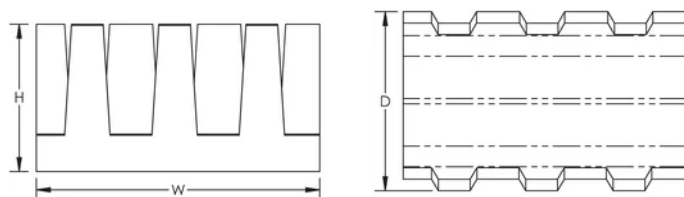
Table 1/2

| Catalog Number | Conductor Size, UL | Material | Finish | Depth (D) | Height (H) | Width (W) |
|----------------|--------------------|----------|--------|-----------|------------|-----------|
| LPA505 | Class 1 | Aluminum | Bare | 40.13mm | 32.26mm | 63.5mm |

Table 2/2

| Catalog Number | Unit Weight |
|----------------|-------------|
| LPA505 | 0.03kg |

DIAGRAMS



WARNING

nVent products shall be installed and used only as indicated in nVent's product instruction sheets and training materials. Instruction sheets are available at www.nvent.com and from your nVent customer service representative. Improper installation, misuse, misapplication or other failure to completely follow nVent's instructions and warnings may cause product malfunction, property damage, serious bodily injury and death and/or void your warranty.



Our powerful portfolio of brands:

CADDY ERICO HOFFMAN ILSCO SCHROFF TRACHTE