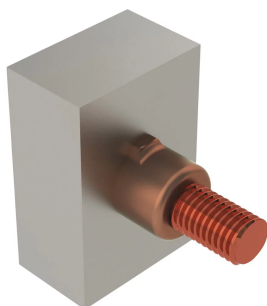


# Copper or Steel Stud to Rail

## Data Solutions



nVent ERICO Cadweld applications for railway properties utilize the nVent ERICO Cadweld Plus F80 and the nVent ERICO Cadweld F80 welding material alloys. nVent ERICO Cadweld exothermically welded connections are engineered to provide a permanent, molecular bond that will not loosen or corrode, enabling connection of dissimilar materials. The connections are designed to perform for the life of the conductor and/or installation. The nVent ERICO Cadweld connection has a current carrying capacity equal to or greater than that of the conductor and will withstand repeated fault currents without failing during operation. Once completed, installers can clearly ensure quality by visually inspecting the new connection.

### FEATURES

Forms a permanent, low resistance connection

Provides a molecular bond

nVent ERICO Cadweld Exothermic Connections are rated with the same current capacity as the conductor

Portable installation equipment with no external source of power required

Installers can be easily trained to make nVent ERICO Cadweld Exothermic Connections

Connections can be visually inspected

### SPECIFICATIONS

Table 1/1

Catalog Number	Mold Family	Stud Type	Connects To
PB13HX31CU	HX Mold Family	5/8" Copper Stud	Rail
PBHVT20P060A1M	HV Mold Family	6 mm x 25 mm Steel Stud	Rail
PBHVT20103245M	HV Mold Family	10 mm x 32 mm Steel Stud	Rail
PBHVT2010A150M	HV Mold Family	10 mm x 32 mm Steel Stud	Rail

Catalog Number	Mold Family	Stud Type	Connects To
PBHVT2010CR73M	HV Mold Family	10 mm x 32 mm Steel Stud	Rail
PBHVT20P100A1M	HV Mold Family	10 mm x 32 mm Steel Stud	Rail
PBHVT20P120A1M	HV Mold Family	12 mm x 38 mm Steel Stud	Rail
PBHVT20P120A2M	HV Mold Family	12 mm x 38 mm Steel Stud	Rail
PBHVT20P16005M	HV Mold Family	16 mm x 48 mm Steel Stud	Rail
PB13HXP100	HX Mold Family	M10 Steel Stud	Rail

## ADDITIONAL PRODUCT DETAILS

For applications such as computer room, tunnel or other low-ventilation areas, specify a smokeless nVent ERICO Cadweld Exolon mold. Add an XL prefix to the standard mold part number when ordering (for example, a PB10GR162G becomes XLPB10GR162G). Similarly, nVent ERICO Cadweld Exolon welding material is also designated by the XL prefix (for example, PB90 becomes XLPB90).

A gap between conductors may be required. See mold tag for more information.

XXXX-XX-XX-L-M-W		
XXXX	Price Key	
XX	Mold Family	
XX	Stud Type	
L*	Split Crucible	Crucible section is split on molds designed with horizontal opening for easier cleaning
M*	Mold Only	
W*	Wear Plates	Reduce mechanical abrasion of molds at cable entry points

\* Empty if none

## WARNING

nVent products shall be installed and used only as indicated in nVent's product instruction sheets and training materials. Instruction sheets are available at [www.nvent.com](http://www.nvent.com) and from your nVent customer service representative. Improper installation, misuse, misapplication or other failure to completely follow nVent's instructions and warnings may cause product malfunction, property damage, serious bodily injury and death and/or void your warranty.



Our powerful portfolio of brands:

**CADDY   ERICO   HOFFMAN   ILSCO   SCHROFF   TRACHTE**