

2 Hole Undercut Lug

Data Solutions



FEATURES

Provides an efficient bolting surface for grounding and power applications

Electrolytic grade copper

SPECIFICATIONS

Material: Copper

Finish: Tinned

Table 1/2

Catalog Number	Length (L)	Width (W)	Thickness (T)	A	B	C
B242JG	114.3mm	38.1mm	12.7mm	19.1mm	44.45mm	6.35mm
B242JH	114.3mm	50.8mm	12.7mm	19.1mm	44.45mm	9.53mm
B242JK	76.2mm	76.2mm	12.7mm	25.4mm	44.45mm	6.35mm

Table 2/2

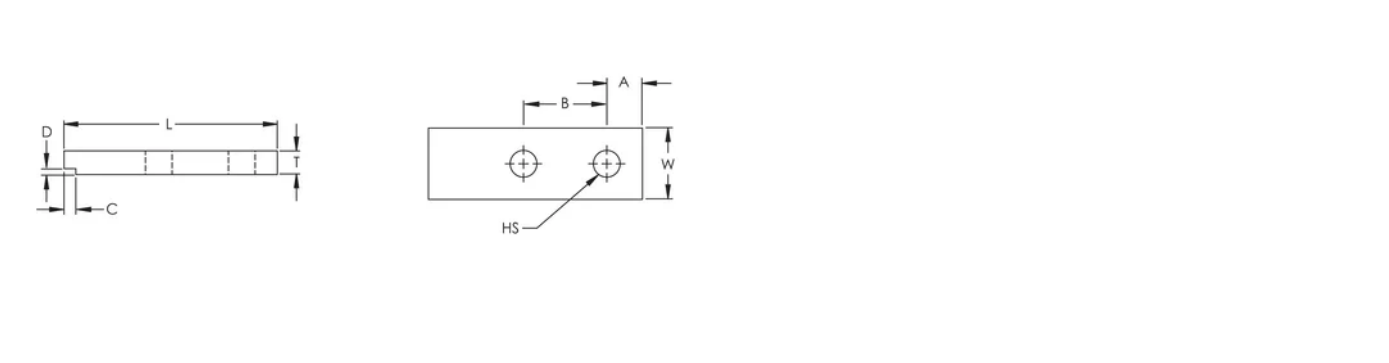
Catalog Number	D	Hole Size (HS)	Equivalent Conductor Size
----------------	---	----------------	---------------------------

B242JG	3.18mm	14.29mm	483.77mm ²
B242JH	3.18mm	14.29mm	645.03mm ²
B242JK	3.18mm	14.29mm	967.54mm ²

ADDITIONAL PRODUCT DETAILS

For sizes not listed, contact us.

DIAGRAMS



WARNING

nVent products shall be installed and used only as indicated in nVent's product instruction sheets and training materials. Instruction sheets are available at www.nvent.com and from your nVent customer service representative. Improper installation, misuse, misapplication or other failure to completely follow nVent's instructions and warnings may cause product malfunction, property damage, serious bodily injury and death and/or void your warranty.



Our powerful portfolio of brands:

CADDY

ERICO

HOFFMAN

ILSCO

SCHROFF

TRACHTE