

2 Hole Offset Lug

Data Solutions



FEATURES

Provides an efficient bolting surface for grounding and power applications

Electrolytic grade copper

For use with nVent ERICO Cadweld type LA connections only

SPECIFICATIONS

Material: Copper

Finish: Tinned

Table 1/2

Catalog Number	Type	Height (H)	Length (L)	Width (W)	Thickness (T)	A
B103AAOL003	Non-NEMA®	14.29mm	95.25mm	12.7mm	1.59mm	15.9mm
B102CEOL	NEMA®	15.88mm	114.3mm	25.4mm	3.18mm	15.9mm
B102CEOL001	NEMA®	15.88mm	114.3mm	25.4mm	3.18mm	15.9mm
B103CEOL003	Non-NEMA®	15.88mm	87.12mm	25.4mm	3.18mm	11.1mm

CatalogNumber	Type	Height (H)	Length (L)	Width (W)	Thickness (T)	A
PBB102CEOL	NEMA®	16mm	114.3mm	25.4mm	3.18mm	15.9mm
B102DEOL	NEMA®	17.53mm	114.3mm	25.4mm	4.76mm	15.9mm
B103DEOL	Non-NEMA®	27.05mm	114.3mm	25.4mm	4.76mm	15.9mm
B102EEOL	NEMA®	19.05mm	120.65mm	25.4mm	6.35mm	15.9mm
B102EFOL	NEMA®	19.05mm	120.65mm	31.75mm	6.35mm	15.9mm
B102EGOL	NEMA®	19.05mm	120.65mm	38.1mm	6.35mm	15.9mm
B102EHOL	NEMA®	19.05mm	127mm	50.8mm	6.35mm	15.9mm
B103EEOL003	Non-NEMA®	19.05mm	51.59mm	25.4mm	6.35mm	11.1mm
B103EGOL001	Non-NEMA®	19.05mm	92.08mm	38.1mm	6.35mm	11.1mm
B102GGOL	NEMA®	31.75mm	149.23mm	38.1mm	9.53mm	15.9mm
B102GHOL	NEMA®	31.75mm	149.23mm	50.8mm	9.53mm	15.9mm
B102JHOL	NEMA®	34.93mm	149.23mm	50.8mm	12.7mm	15.9mm

Table 2/2

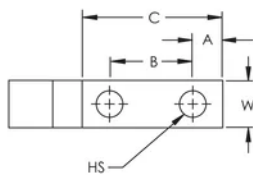
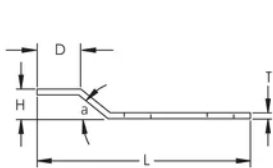
Catalog Number	B	C	D	Hole Size (HS)	Angle (a)	Equivalent Conductor Size
B103AAOL003	25.4mm	57.15mm	22.23mm	6.35mm	45°	20.16mm ²
B102CEOL	44.45mm	76.2mm	22.23mm	14.29mm	45°	80.63mm ²
B102CEOL001	44.45mm	76.2mm	22.23mm	7.94mm	45°	80.63mm ²
B103CEOL003	25.4mm	49.02mm	22.23mm	11.11mm	45°	80.63mm ²
PBB102CEOL	44.45mm	76.2mm	22.23mm	14.29mm	45°	80.63mm ²

CatalogNumber	B	C	D	Hole Size (HS)	Angle (a)	Equivalent Conductor Size
B102DEOL	44.45mm	76.2mm	22.23mm	14.29mm	45°	120.94mm ²
B103DEOL	25.4mm	49.02mm	22.23mm	11.11mm	45°	120.94mm ²
B102EEOL	44.45mm	76.2mm	26.92mm	14.29mm	45°	161.26mm ²
B102EFOL	44.45mm	76.2mm	26.92mm	14.29mm	45°	201.57mm ²
B102EGOL	44.45mm	76.2mm	26.92mm	14.29mm	45°	242mm ²
B102EHOL	44.45mm	76.2mm	31.75mm	14.29mm	45°	322.51mm ²
B103EEOL003	25.4mm	51.59mm	26.92mm	11.11mm	45°	161.26mm ²
B103EGOL001	25.4mm	50.8mm	25.4mm	11.11mm	45°	241.89mm ²
B102GGOL	44.45mm	82.55mm	38.1mm	14.29mm	45°	362.83mm ²
B102GHOL	44.45mm	82.55mm	38.1mm	14.29mm	45°	483.77mm ²
B102JHOL	44.45mm	82.55mm	50.8mm	14.29mm	45°	645.03mm ²

ADDITIONAL PRODUCT DETAILS

For sizes not listed, contact us.

DIAGRAMS



WARNING

nVent products shall be installed and used only as indicated in nVent's product instruction sheets and training materials. Instruction sheets are available at www.nvent.com and from your nVent customer service representative. Improper installation, misuse, misapplication or other failure to completely follow nVent's instructions and warnings may cause product malfunction, property damage, serious bodily injury and death and/or void your warranty.



Our powerful portfolio of brands:

CADDY ERICO HOFFMAN ILSCO SCHROFF TRACHTE