

# 2 Hole Lug, 90°

## Data Solutions



### FEATURES

Provides an efficient bolting surface for grounding and power applications

Electrolytic grade copper

For use with nVent ERICO Cadweld type LA connections only

### SPECIFICATIONS

**Material:** Copper

**Finish:** Tinned

Table 1/2

Catalog Number	Height (H)	Length (L)	Width (W)	Thickness (T)	A	B
B102EF002	38.1mm	92.1mm	31.75mm	6.35mm	15.9mm	44.45mm
B102EG002	38.1mm	92.1mm	38.1mm	6.35mm	15.9mm	44.45mm

Table 2/2

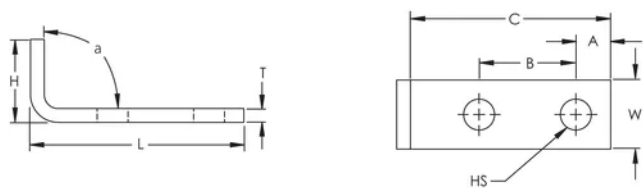
Catalog Number	C	Hole Size (HS)	Angle (a)	Equivalent Conductor Size
----------------	---	----------------	-----------	---------------------------

B102EF002	85.6mm	14.3mm	90°	201.57mm <sup>2</sup>
B102EG002	85.6mm	14.3mm	90°	242mm <sup>2</sup>

### ADDITIONAL PRODUCT DETAILS

For sizes not listed, contact us.

### DIAGRAMS



### WARNING

nVent products shall be installed and used only as indicated in nVent's product instruction sheets and training materials. Instruction sheets are available at [www.nvent.com](http://www.nvent.com) and from your nVent customer service representative. Improper installation, misuse, misapplication or other failure to completely follow nVent's instructions and warnings may cause product malfunction, property damage, serious bodily injury and death and/or void your warranty.



Our powerful portfolio of brands:

CADDY   ERICO   HOFFMAN   ILSCO   SCHROFF   TRACHTE