

1 Hole Lug

Data Solutions



FEATURES

Provides an efficient bolting surface for grounding and power applications

Electrolytic grade copper

For use with nVent ERICO Cadweld type LA connections only

SPECIFICATIONS

Material: Copper

Type: NEMA®

Finish: Tinned

Table 1/1

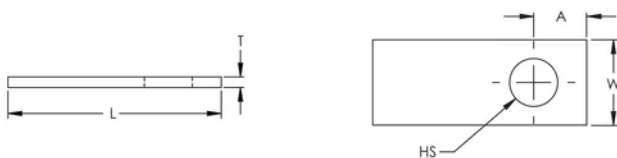
Catalog Number	Length (L)	Width (W)	Thickness (T)	A	Hole Size (HS)	Equivalent Conductor Size
B101AA	31.75mm	12.7mm	1.57mm	7.9mm	7.14mm	20mm ²
B101CE	49.28mm	25.4mm	3.18mm	12.7mm	11.11mm	80.63mm ²
B101CE002	49.28mm	25.4mm	3.18mm	19.1mm	17.46mm	80.63mm ²
B101QQ	49.3mm	25.4mm	3.17mm	12mm	10.5mm	81mm ²

CatalogNumber	Length (L)	Width (W)	Thickness (T)	A	Hole Size (HS)	Equivalent Conductor Size
B101DE	49.28mm	25.4mm	4.76mm	14.3mm	14.29mm	120.94mm ²
B101EE	55.63mm	25.4mm	6.35mm	15.9mm	14.29mm	161.26mm ²
B101EG	63.5mm	38.1mm	6.35mm	19.1mm	17.46mm	241.89mm ²
PBB101EG	63.5mm	38.1mm	6.35mm	19.1mm	17.46mm	241.89mm ²
B101GG	69.85mm	38.1mm	9.53mm	19.1mm	17.46mm	362.83mm ²
B101GH	85.85mm	50.8mm	9.53mm	25.4mm	17.46mm	483.77mm ²
PBB101GH	85.85mm	50.8mm	9.53mm	25.4mm	17.46mm	483.77mm ²
B101JH	85.85mm	50.8mm	12.7mm	25.4mm	14.29mm	645.03mm ²
B103JH001	76.2mm	50.8mm	12.7mm	31.8mm	17.46mm	645.03mm ²
B103JH010	101.6mm	50.8mm	12.7mm	34.9mm	15.88mm	645.03mm ²

ADDITIONAL PRODUCT DETAILS

For sizes not listed, contact us.

DIAGRAMS



WARNING

nVent products shall be installed and used only as indicated in nVent's product instruction sheets and training materials. Instruction sheets are available at www.nvent.com and from your nVent customer service representative. Improper

installation, misuse, misapplication or other failure to completely follow nVent's instructions and warnings may cause product malfunction, property damage, serious bodily injury and death and/or void your warranty.



Our powerful portfolio of brands:

CADDY ERICO HOFFMAN ILSCO SCHROFF TRACHTE