

# 1 Hole Lug, GL Style

## Data Solutions



### FEATURES

Provides an efficient bolting surface for grounding and power applications

Electrolytic grade copper

For use with nVent ERICO Cadweld type GL connections only

### SPECIFICATIONS

**Material:** Copper

**Type:** NEMA®

**Finish:** Tinned

Table 1/2

Catalog Number	Article Number	Height (H)	Length (L)	Width (W)	Thickness (T)	A
B121CE	183650	11.18mm	36.58mm	25.4mm	3.18mm	15.9mm
B121QQ		11mm	38.5mm	25.4mm	3.2mm	16mm
B121DE		11.18mm	37.34mm	25.4mm	4.76mm	15.9mm
B121SQ		11mm	36.5mm	25.4mm	4.76mm	16mm

CatalogNumber	Article Number	Height (H)	Length (L)	Width (W)	Thickness (T)	A
B121EE		11.18mm	38.1mm	25.4mm	6.35mm	15.9mm
B121EG		11.18mm	38.1mm	38.1mm	6.35mm	15.9mm

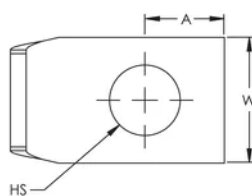
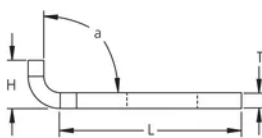
Table 2/2

Catalog Number	Article Number	Hole Size (HS)	Angle (a)	Equivalent Conductor Size
B121CE	183650	14.29mm	90°	80.63mm <sup>2</sup>
B121QQ		14.3mm	90°	81mm <sup>2</sup>
B121DE		14.29mm	105°	120.94mm <sup>2</sup>
B121SQ		14mm	90°	121mm <sup>2</sup>
B121EE		14.29mm	135°	161.26mm <sup>2</sup>
B121EG		14.29mm	135°	241.89mm <sup>2</sup>

## ADDITIONAL PRODUCT DETAILS

For sizes not listed, contact us.

## DIAGRAMS



## WARNING

nVent products shall be installed and used only as indicated in nVent's product instruction sheets and training materials. Instruction sheets are available at [www.nvent.com](http://www.nvent.com) and from your nVent customer service representative. Improper installation, misuse, misapplication or other failure to completely follow nVent's instructions and warnings may cause product malfunction, property damage, serious bodily injury and death and/or void your warranty.



Our powerful portfolio of brands:

**CADDY   ERICO   HOFFMAN   ILSCO   SCHROFF   TRACHTE**