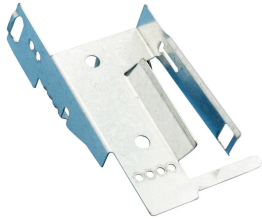


MC/AC and Non-Metallic Sheathed Cable Support



CERTIFICATIONS



FEATURES

Effectively supports non-metallic sheathed and MC/AC cables

Secures cables 1-1/4" from the face of the stud

Flared edges prevent damage to the cable jacket

Holds up to four MC/AC cables or four 12-3 non-metallic sheathed cables with ground

Unique "stop-bend" design helps prevent cables from being installed too far from face of stud

SPECIFICATIONS

Table 1/1

Catalog Number	Material	Finish
CER4	Steel	Pregalvanized

WARNING

nVent products shall be installed and used only as indicated in nVent's product instruction sheets and training materials. Instruction sheets are available at www.nvent.com and from your nVent customer service representative. Improper

installation, misuse, misapplication or other failure to completely follow nVent's instructions and warnings may cause product malfunction, property damage, serious bodily injury and death and/or void your warranty.

North America

+1.800.753.9221
Option 1 – Customer Care
Option 2 – Technical
Support

Europe

Netherlands:
+31 800-0200135
France:
+33 800 901 793

Europe

Germany:
800 1890272
Other Countries:
+31 13 5835404

APAC

Shanghai:
+ 86 21 2412 1618/19
Sydney:
+61 2 9751 8500



Our powerful portfolio of brands:

CADDY ERICO HOFFMAN ILSCO SCHROFF TRACHTE

