

Horizontal Pouring Basin, Side Fill, Extended



Extended side fill horizontal pouring basins are used when interferences of the structure will not allow top filling of the sleeve and the interferences are directly next to the tap hole in the sleeve.

FEATURES

Made from heat-resistant graphite

Durable, re-usable and long lasting

Designed for use with T-Series and B-Series horizontal side fill sleeves

SPECIFICATIONS

Material: Graphite

Table 1/2

Catalog Number	Diameter (Ø)	Length 1 (L1)	Length 2 (L2)	Width (W)	Height 1 (H1)	Height 2 (H2)
RBHSB17070C	48 mm	432 mm	38 mm	76 mm	178mm	76mm
RBHSB14065J	76 mm	356 mm	38 mm	76 mm	165mm	76mm
RBHSB14065F	64 mm	356 mm	38 mm	76 mm	165mm	76mm
RBHSB12065X	38 mm	305 mm	38 mm	76 mm	165mm	76mm
RBHSB14070D	54 mm	356 mm	38 mm	76 mm	178mm	76mm
RBHSA9050F	64 mm	229 mm	38 mm	76 mm	127mm	76mm

CatalogNumber	Diameter (Ø)	Length 1 (L1)	Length 2 (L2)	Width (W)	Height 1 (H1)	Height 2 (H2)
RBHSB14075M	95 mm	356 mm	38 mm	76 mm	191mm	76mm
RBHSA9050D	54 mm	229 mm	38 mm	76 mm	127mm	76mm
RBHSB16070F	64 mm	406 mm	38 mm	76 mm	178mm	76mm
RBHSB12065M	95 mm	305 mm	38 mm	76 mm	165mm	76mm
RBHSB12065J	76 mm	305 mm	38 mm	76 mm	165mm	76mm
RBHSB12065F	64 mm	305 mm	38 mm	76 mm	165mm	76mm
RBHSB177550 M	95 mm	451 mm	38 mm	76 mm	127mm	76mm
RBHSB12065C	48 mm	305 mm	38 mm	76 mm	165mm	76mm
RBHSC23010M	95 mm	584 mm	38 mm	76 mm	254mm	76mm
RBHSB10560X	38 mm	267 mm	38 mm	76 mm	152mm	76mm
RBHSC23075M	95 mm	584 mm	38 mm	76 mm	191mm	76mm
RBHSA9750X	38 mm	248 mm	38 mm	76 mm	127mm	76mm
RBHSA9560M	95 mm	241 mm	38 mm	76 mm	152mm	76mm
RBHSC30070D	54 mm	762 mm	38 mm	76 mm	191mm	76mm

Table 2/2

Catalog Number	Package Quantity
RBHSB17070C	1
RBHSB14065J	1
RBHSB14065F	1

Catalog Number	Package Quantity
RBHSB12065X	1
RBHSB14070D	1
RBHSA9050F	1
RBHSB14075M	1
RBHSA9050D	1
RBHSB16070F	1
RBHSB12065M	1
RBHSB12065J	1
RBHSB12065F	1
RBHSB177550M	1
RBHSB12065C	1
RBHSC23010M	1
RBHSB10560X	1
RBHSC23075M	1
RBHSA9750X	1
RBHSA9560M	1
RBHSC30070D	1

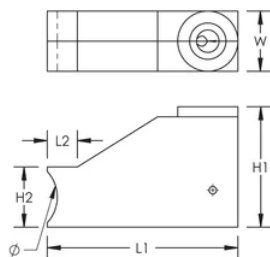
ADDITIONAL PRODUCT DETAILS

RBHSA pouring basins require one RBW332 pouring basin frame and two RBS5000 bolt retainers. RBHSB pouring basins require one RBW3321 pouring basin frame and one RBS5000 bolt retainer. RBHSC pouring basins require one RBW3322 pouring basin frame and one RBS5000 bolt retainer (all sold separately).

Prior to installation, please read and understand all of the detailed instructions and safety notices provided in the nVent LENTON Cadweld Rebar Splicing System Instruction Manual.

Sizes not shown may be available by special order. Contact your nVent LENTON representative for more information.

DIAGRAMS



WARNING

nVent products shall be installed and used only as indicated in nVent's product instruction sheets and training materials. Instruction sheets are available at www.nvent.com and from your nVent customer service representative. Improper installation, misuse, misapplication or other failure to completely follow nVent's instructions and warnings may cause product malfunction, property damage, serious bodily injury and death and/or void your warranty.

North America

+1.800.753.9221
Option 1 – Customer Care
Option 2 – Technical
Support

Europe

Netherlands:
+31 800-0200135
France:
+33 800 901 793

Europe

Germany:
800 1890272
Other Countries:
+31 13 5835404

APAC

Shanghai:
+ 86 21 2412 1618/19
Sydney:
+61 2 9751 8500



Our powerful portfolio of brands:

CADDY ERICO HOFFMAN ILSCO SCHROFF TRACHTE