

A12 Standard Transition Coupler, Plain, Worldwide Design



CERTIFICATIONS



FEATURES

Designed to splice different diameter bars where the second bar can be rotated and is not restricted in its axial direction

Slim design maintains concrete cover

Installs quickly and easily

SPECIFICATIONS

Finish:	Plain
Material:	Steel
Design Version:	Worldwide (Globally Available Materials)

Table 1/2

Catalog Number	Rebar Size, Metric	Rebar Size, US	Rebar Size, Canada	Hex Width (W)	Diameter (Ø)	Length (L)
----------------	--------------------	----------------	--------------------	---------------	--------------	------------

EL1210A12N	12 mm, 10 mm	#4, #3		17 mm		55mm
EL1614A12N	16 mm, 14 mm			22 mm		64mm
EL1412A12N	14 mm, 12 mm			22 mm		57mm
EL1612A12N	16 mm, 12 mm	#5, #4	15M, 10M	22 mm		61mm
EL1410A12N	14 mm, 10 mm			22 mm		57mm
EL1610A12N	16 mm, 10 mm	#5, #3		22 mm		61mm
EL1812A12N	18 mm, 12 mm			27 mm		66mm
EL1816A12N	18 mm, 16 mm			27 mm		71mm
EL1810A12N	18 mm, 10 mm			27 mm		66mm
EL1814A12N	18 mm, 14 mm			27 mm		69mm
EL2012A12N	20 mm, 12 mm	#6, #4	20M, 10M	27 mm		74mm
EL2014A12N	20 mm, 14 mm			27 mm		77mm
EL2010A12N	20 mm, 10 mm	#6, #3		27 mm		74mm
EL2016A12N	20 mm, 16 mm	#6, #5	20M, 15M	27 mm		80mm
EL2018A12N	20 mm, 18 mm			27 mm		85mm
EL2212A12N	22 mm, 12 mm	#7, #4		30 mm		77mm
EL2216A12N	22 mm, 16 mm	#7, #5		30 mm		83mm
EL2210A12N	22 mm, 10 mm	#7, #3		30 mm		77mm
EL2214A12N	22 mm, 14 mm			30 mm		80mm

EL2218A12N	22 mm, 18 mm			30 mm		87mm
EL2220A12N	22 mm, 20 mm	#7, #6		30 mm		95mm
EL2512A12N	25 mm, 12 mm	#8, #4	25M, 10M		35 mm	81mm
EL2514A12N	25 mm, 14 mm				35 mm	83mm
EL2510A12N	25 mm, 10 mm	#8, #3			35 mm	81mm
EL2516A12N	25 mm, 16 mm	#8, #5	25M, 15M		35 mm	86mm
EL2518A12N	25 mm, 18 mm				35 mm	90mm
EL2522A12N	25 mm, 22 mm	#8, #7			35 mm	100mm
EL2520A12N	25 mm, 20 mm	#8, #6	25M, 20M		35 mm	98mm
EL2814A12N	28 mm, 14 mm				40 mm	86mm
EL2816A12N	28 mm, 16 mm	#9, #5	30M, 15M		40 mm	88mm
EL2818A12N	28 mm, 18 mm				40 mm	93mm
EL3016A12N	30 mm, 16 mm				40 mm	99mm
EL2825A12N	28 mm, 25 mm	#9, #8	30M, 25M		40 mm	104mm
EL3028A12N	30 mm, 28 mm				40 mm	117mm
EL2820A12N	28 mm, 20 mm	#9, #6	30M, 20M		40 mm	101mm
EL3018A12N	30 mm, 18 mm				40 mm	103mm
EL2822A12N	28 mm, 22 mm	#9, #7			40 mm	103mm
EL3025A12N	30 mm, 25 mm				40 mm	115mm

EL3022A12N	30 mm, 22 mm				40 mm	113mm
EL3020A12N	30 mm, 20 mm				40 mm	110mm
EL3216A12N	32 mm, 16 mm	#10, #5			45 mm	92mm
EL3218A12N	32 mm, 18 mm				45 mm	98mm
EL3228A12N	32 mm, 28 mm	#10, #9			45 mm	110mm
EL4038A12N	40 mm, 38 mm				55 mm	133mm
EL3432A12N	34 mm, 32 mm				50 mm	123mm
EL3836A12N	38 mm, 36 mm	#12, #11			55 mm	128mm
EL3632A12N	36 mm, 32 mm	#11, #10			50 mm	120mm
EL4036A12N	40 mm, 36 mm				55 mm	132mm
EL3634A12N	36 mm, 34 mm				50 mm	130mm
EL3225A12N	32 mm, 25 mm	#10, #8			45 mm	109mm
EL3832A12N	38 mm, 32 mm				55 mm	122mm
EL3428A12N	34 mm, 28 mm				50 mm	120mm
EL3230A12N	32 mm, 30 mm				45 mm	120mm
EL3220A12N	32 mm, 20 mm	#10, #6			45 mm	105mm
EL3430A12N	34 mm, 30 mm				50 mm	131mm
EL3834A12N	38 mm, 34 mm				55 mm	132mm
EL4034A12N	40 mm, 34 mm				55 mm	136mm

EL4032A12N	40 mm, 32 mm				55 mm	126mm
EL3222A12N	32 mm, 22 mm	#10, #7			45 mm	107mm
EL3630A12N	36 mm, 30 mm				50 mm	128mm
EL3628A12N	36 mm, 28 mm	#11, #9	35M, 30M		50 mm	118mm
EL3828A12N	38 mm, 28 mm	#12, #9			55 mm	119mm
EL3425A12N	34 mm, 25 mm				50 mm	119mm
EL4028A12N	40 mm, 28 mm				55 mm	123mm
EL3625A12N	36 mm, 25 mm	#11, #8	35M, 25M		50 mm	116mm
EL3830A12N	38 mm, 30 mm				55 mm	130mm
EL4030A12N	40 mm, 30 mm				55 mm	134mm
EL4025A12N	40 mm, 25 mm				55 mm	122mm
EL3422A12N	34 mm, 22 mm				50 mm	117mm
EL3825A12N	38 mm, 25 mm	#12, #8			55 mm	118mm
EL3622A12N	36 mm, 22 mm	#11, #7			50 mm	114mm
EL3420A12N	34 mm, 20 mm				50 mm	115mm
EL3620A12N	36 mm, 20 mm	#11, #6	35M, 20M		50 mm	112mm
EL50T36A12N	50 mm, 36 mm				70 mm	153mm
EL43T36A12N	43 mm, 36 mm	#14, #11	45M, 35M		60 mm	148mm
EL50T40A12N	50 mm, 40 mm				70 mm	157mm

EL50T38A12N	50 mm, 38 mm				70 mm	154mm
EL50T32A12N	50 mm, 32 mm				70 mm	147mm
EL50T34A12N	50 mm, 34 mm				70 mm	156mm
EL57T43TA12N	57 mm, 43 mm	#18, #14	55M, 45M		80 mm	184mm

Table 2/2

Catalog Number	Bar Depth 1 (BD1)	Bar Depth 2 (BD2)	Bar Gap (BG)	Unit Weight	Package Quantity	Certifications
EL1210A12N	19mm	18mm	18mm	0.08 kg	285	DIBt, RISE, Kontrollrådet, nVent LENTON EPD - Product Specific, ITB
EL1614A12N	24mm	21mm	19mm	0.14 kg	150	CARES, Kontrollrådet, RISE, nVent LENTON EPD - Product Specific, Kontrollrådet, ITB, DIBt, KOMO
EL1412A12N	21mm	19mm	17mm	0.14 kg	150	RISE, DIBt, Kontrollrådet, Kontrollrådet, nVent LENTON EPD - Product Specific, CARES, KOMO, ITB
EL1612A12N	24mm	19mm	18mm	0.14 kg	150	LA City Approval, ITB, Kontrollrådet, Kontrollrådet, IAPMO®-UES, CARES, RISE, nVent LENTON EPD - Product Specific, KOMO
EL1410A12N	21mm	18mm	18mm	0.15 kg	150	ITB, nVent LENTON EPD - Product Specific, Kontrollrådet

CatalogNumber	Bar Depth 1 (BD1)	Bar Depth 2 (BD2)	Bar Gap (BG)	Unit Weight	Package Quantity	Certifications
EL1610A12N	24mm	18mm	19mm	0.15 kg	150	Kontrollrådet, ITB, nVent LENTON EPD - Product Specific
EL1812A12N	29mm	19mm	18mm	0.25 kg	70	ITB, nVent LENTON EPD - Product Specific
EL1816A12N	29mm	24mm	18mm	0.25 kg	70	nVent LENTON EPD - Product Specific, ITB
EL1810A12N	29mm	18mm	19mm	0.25 kg	70	ITB, nVent LENTON EPD - Product Specific
EL1814A12N	29mm	21mm	19mm	0.25 kg	70	nVent LENTON EPD - Product Specific, ITB
EL2012A12N	35mm	19mm	20mm	0.26 kg	70	ITB, nVent LENTON EPD - Product Specific, KOMO, Kontrollrådet, CARES, RISE, Kontrollrådet
EL2014A12N	35mm	21mm	21mm	0.27 kg	70	CARES, RISE, Kontrollrådet, KOMO, nVent LENTON EPD - Product Specific, ITB, Kontrollrådet
EL2010A12N	35mm	18mm	21mm	0.27 kg	70	Kontrollrådet, ITB, nVent LENTON EPD - Product Specific

CatalogNumber	Bar Depth 1 (BD1)	Bar Depth 2 (BD2)	Bar Gap (BG)	Unit Weight	Package Quantity	Certifications
EL2016A12N	35mm	24mm	21mm	0.27 kg	70	DIbt, LA City Approval, ITB, IAPMO®-UES, KOMO, RISE, Kontrollrådet, nVent LENTON EPD - Product Specific, Kontrollrådet, CARES
EL2018A12N	35mm	29mm	21mm	0.27 kg	70	nVent LENTON EPD - Product Specific, ITB
EL2212A12N	37mm	19mm	21mm	0.34 kg	50	nVent LENTON EPD - Product Specific, ITB
EL2216A12N	37mm	24mm	22mm	0.35 kg	50	nVent LENTON EPD - Product Specific, ITB
EL2210A12N	37mm	18mm	22mm	0.35 kg	50	ITB, nVent LENTON EPD - Product Specific
EL2214A12N	37mm	21mm	22mm	0.35 kg	50	ITB, nVent LENTON EPD - Product Specific
EL2218A12N	37mm	29mm	21mm	0.36 kg	50	nVent LENTON EPD - Product Specific, ITB
EL2220A12N	37mm	35mm	23mm	0.38 kg	50	nVent LENTON EPD - Product Specific, LA City Approval, IAPMO®-UES, ITB
EL2512A12N	40mm	19mm	22mm	0.43 kg	50	Kontrollrådet, KOMO, CARES, Kontrollrådet, nVent LENTON EPD - Product Specific, ITB, RISE

CatalogNumber	Bar Depth 1 (BD1)	Bar Depth 2 (BD2)	Bar Gap (BG)	Unit Weight	Package Quantity	Certifications
EL2514A12N	40mm	21mm	22mm	0.44 kg	50	CARES, RISE, ITB, Kontrollrådet, nVent LENTON EPD - Product Specific, KOMO, Kontrollrådet
EL2510A12N	40mm	18mm	23mm	0.44 kg	50	nVent LENTON EPD - Product Specific, Kontrollrådet
EL2516A12N	40mm	24mm	22mm	0.45 kg	50	CARES, ITB, KOMO, Kontrollrådet, RISE, Kontrollrådet, nVent LENTON EPD - Product Specific
EL2518A12N	40mm	29mm	21mm	0.47 kg	50	ITB, nVent LENTON EPD - Product Specific
EL2522A12N	40mm	37mm	23mm	0.49 kg	50	IAPMO®-UES, LA City Approval, nVent LENTON EPD - Product Specific, ITB
EL2520A12N	40mm	35mm	23mm	0.5 kg	50	RISE, Kontrollrådet, DIBt, Kontrollrådet, CARES, nVent LENTON EPD - Product Specific, KOMO, ITB
EL2814A12N	42mm	21mm	23mm	0.61 kg	38	KOMO, nVent LENTON EPD - Product Specific, ITB
EL2816A12N	42mm	24mm	22mm	0.62 kg	38	nVent LENTON EPD - Product Specific, ITB, KOMO

CatalogNumber	Bar Depth 1 (BD1)	Bar Depth 2 (BD2)	Bar Gap (BG)	Unit Weight	Package Quantity	Certifications
EL2818A12N	42mm	29mm	22mm	0.65 kg	38	nVent LENTON EPD - Product Specific, ITB
EL3016A12N	52mm	24mm	23mm	0.66 kg	34	nVent LENTON EPD - Product Specific
EL2825A12N	42mm	40mm	22mm	0.67 kg	38	KOMO, ITB, IAPMO®-UES, nVent LENTON EPD - Product Specific, LA City Approval, DIBt
EL3028A12N	52mm	42mm	23mm	0.68 kg	34	nVent LENTON EPD - Product Specific
EL2820A12N	42mm	35mm	24mm	0.69 kg	38	nVent LENTON EPD - Product Specific, KOMO, ITB
EL3018A12N	52mm	29mm	22mm	0.69 kg	34	nVent LENTON EPD - Product Specific
EL2822A12N	42mm	37mm	24mm	0.69 kg	38	nVent LENTON EPD - Product Specific, ITB
EL3025A12N	52mm	40mm	23mm	0.71 kg	34	nVent LENTON EPD - Product Specific
EL3022A12N	52mm	37mm	24mm	0.73 kg	34	nVent LENTON EPD - Product Specific
EL3020A12N	52mm	35mm	23mm	0.73 kg	34	nVent LENTON EPD - Product Specific
EL3216A12N	45mm	24mm	23mm	0.81 kg	16	CARES, Kontrollrådet, KOMO, RISE, Kontrollrådet, ITB, nVent LENTON EPD - Product Specific

CatalogNumber	Bar Depth 1 (BD1)	Bar Depth 2 (BD2)	Bar Gap (BG)	Unit Weight	Package Quantity	Certifications
EL3218A12N	45mm	29mm	24mm	0.86 kg	16	ITB, nVent LENTON EPD - Product Specific
EL3228A12N	45mm	42mm	23mm	0.88 kg	16	ITB, LA City Approval, IAPMO®-UES, DIBt, KOMO, nVent LENTON EPD - Product Specific
EL4038A12N	57mm	53mm	23mm	1.47 kg	12	nVent LENTON EPD - Product Specific
EL3432A12N	55mm	45mm	23mm	1.24 kg	16	nVent LENTON EPD - Product Specific
EL3836A12N	53mm	52mm	23mm	1.51 kg	12	nVent LENTON EPD - Product Specific
EL3632A12N	52mm	45mm	23mm	1.15 kg	16	nVent LENTON EPD - Product Specific, IAPMO®-UES, LA City Approval
EL4036A12N	57mm	52mm	23mm	1.5 kg	12	nVent LENTON EPD - Product Specific
EL3634A12N	52mm	55mm	23mm	1.23 kg	16	nVent LENTON EPD - Product Specific
EL3225A12N	45mm	40mm	24mm	0.91 kg	16	Kontrollrådet, Kontrollrådet, CARES, ITB, KOMO, RISE, nVent LENTON EPD - Product Specific
EL3832A12N	53mm	45mm	24mm	1.51 kg	12	nVent LENTON EPD - Product Specific
EL3428A12N	55mm	42mm	23mm	1.28 kg	16	nVent LENTON EPD - Product Specific

CatalogNumber	Bar Depth 1 (BD1)	Bar Depth 2 (BD2)	Bar Gap (BG)	Unit Weight	Package Quantity	Certifications
EL3230A12N	45mm	52mm	23mm	0.95 kg	16	nVent LENTON EPD - Product Specific
EL3220A12N	45mm	35mm	25mm	0.92 kg	16	RISE, Kontrollrådet, Kontrollrådet, CARES, ITB, nVent LENTON EPD - Product Specific, KOMO
EL3430A12N	55mm	52mm	24mm	1.37 kg	16	nVent LENTON EPD - Product Specific
EL3834A12N	53mm	55mm	24mm	1.62 kg	12	nVent LENTON EPD - Product Specific
EL4034A12N	57mm	55mm	24mm	1.61 kg	12	nVent LENTON EPD - Product Specific
EL4032A12N	57mm	45mm	24mm	1.5 kg	12	nVent LENTON EPD - Product Specific, DIBt, ITB, CARES, RISE, Kontrollrådet
EL3222A12N	45mm	37mm	25mm	0.93 kg	16	ITB, nVent LENTON EPD - Product Specific
EL3630A12N	52mm	52mm	24mm	1.28 kg	16	nVent LENTON EPD - Product Specific
EL3628A12N	52mm	42mm	24mm	1.19 kg	16	nVent LENTON EPD - Product Specific
EL3828A12N	53mm	42mm	24mm	1.54 kg	12	nVent LENTON EPD - Product Specific
EL3425A12N	55mm	40mm	24mm	1.31 kg	16	nVent LENTON EPD - Product Specific
EL4028A12N	57mm	42mm	24mm	1.54 kg	12	nVent LENTON EPD - Product Specific, ITB

CatalogNumber	Bar Depth 1 (BD1)	Bar Depth 2 (BD2)	Bar Gap (BG)	Unit Weight	Package Quantity	Certifications
EL3625A12N	52mm	40mm	24mm	1.22 kg	16	nVent LENTON EPD - Product Specific
EL3830A12N	53mm	52mm	25mm	1.67 kg	12	nVent LENTON EPD - Product Specific
EL4030A12N	57mm	52mm	25mm	1.66 kg	12	nVent LENTON EPD - Product Specific
EL4025A12N	57mm	40mm	25mm	1.56 kg	100	nVent LENTON EPD - Product Specific, CARES, RISE, ITB, Kontrollrådet
EL3422A12N	55mm	37mm	25mm	1.32 kg	16	nVent LENTON EPD - Product Specific
EL3825A12N	53mm	40mm	25mm	1.56 kg	12	nVent LENTON EPD - Product Specific
EL3622A12N	52mm	37mm	25mm	1.22 kg	16	nVent LENTON EPD - Product Specific
EL3420A12N	55mm	35mm	25mm	1.31 kg	16	nVent LENTON EPD - Product Specific
EL3620A12N	52mm	35mm	25mm	1.22 kg	16	nVent LENTON EPD - Product Specific
EL50T36A12N	70mm	52mm	31mm	3.08 kg	1	nVent LENTON EPD - Product Specific
EL43T36A12N	66mm	52mm	30mm	2.1 kg	10	LA City Approval, IAPMO®-UES, nVent LENTON EPD - Product Specific
EL50T40A12N	70mm	57mm	30mm	3.09 kg	8	CARES, nVent LENTON EPD - Product Specific

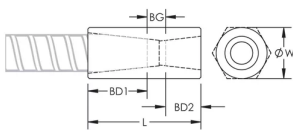
CatalogNumber	Bar Depth 1 (BD1)	Bar Depth 2 (BD2)	Bar Gap (BG)	Unit Weight	Package Quantity	Certifications
EL50T38A12N	70mm	53mm	31mm	3.06 kg	8	nVent LENTON EPD - Product Specific
EL50T32A12N	70mm	45mm	32mm	3 kg	8	CARES, nVent LENTON EPD - Product Specific
EL50T34A12N	70mm	55mm	31mm	3.22 kg	8	nVent LENTON EPD - Product Specific
EL57T43TA12N	83mm	66mm	35mm	4.87 kg	5	LA City Approval, IAPMO®-UES, nVent LENTON EPD - Product Specific

Designed to Meet: AASHTO;ABNT NBR 8548:1984;ACI 318 Type 1 (125% Specified Yield);ACI 318 Type 2 (Specified Tensile);ACI 349;ACI 359;AS3600

ADDITIONAL PRODUCT DETAILS

Bar dimensions and weights listed may vary by region. Coupler sizes not shown may be available by special order. Contact your nVent LENTON representative for more information.

DIAGRAMS



WARNING

nVent products shall be installed and used only as indicated in nVent's product instruction sheets and training materials. Instruction sheets are available at www.nvent.com and from your nVent customer service representative. Improper installation, misuse, misapplication or other failure to completely follow nVent's instructions and warnings may cause product malfunction, property damage, serious bodily injury and death and/or void your warranty.

North America

+1.800.753.9221

Option 1 – Customer Care

Option 2 – Technical

Support

Europe

Netherlands:

+31 800-0200135

France:

+33 800 901 793

Europe

Germany:

800 1890272

Other Countries:

+31 13 5835404

APAC

Shanghai:

+ 86 21 2412 1618/19

Sydney:

+61 2 9751 8500



Our powerful portfolio of brands:

CADDY

ERICO

HOFFMAN

ILSCO

SCHROFF

TRACHTE