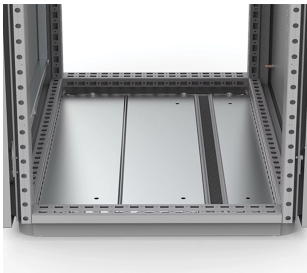


# Section Profiles For Cable Entry, SCE, 30x635x20mm, PVC

## CATALOG NUMBER

**SCE800**



This click-in section profile has a pre-mounted gasket to seal the empty space around cables routed between bottom plates, which maintains the enclosure's protection degree.

## FEATURES

Description: For sealing the cable entry between gland plates. Forms a tight seal around cables and fills gaps to prevent dust from entering. The foam is pre-fitted in the section profile that can be easily mounted in the bottom plates thanks to its click-in fixing solution. An alternative to the bottom late gasket kit BG01.

Material: Extruded PVC section profile. Gasket: adhesive foam with cross-section of 30 x 25 mm.

Pack quantity: 1 set consisting of 2 click-in section profiles with foam rubber. SCE-R variant includes an extra bottom plate.

## PRODUCT ATTRIBUTES

Article Number: SCE800

Height: 30mm

Width: 800mm

Depth: 20mm

Enclosure Material: PVC

Material: PVC

Finish: Smooth Matte

Color: Black

Thickness: 1.2mm

Weight: 0.5kg

For Mounting: In Depth

## WARNING

---

nVent products shall be installed and used only as indicated in nVent's product instruction sheets and training materials. Instruction sheets are available at [www.nvent.com](http://www.nvent.com) and from your nVent customer service representative. Improper installation, misuse, misapplication or other failure to completely follow nVent's instructions and warnings may cause product malfunction, property damage, serious bodily injury and death and/or void your warranty.



Our powerful portfolio of brands:

**CADDY   ERICO   HOFFMAN   ILSCO   SCHROFF   TRACHTE**