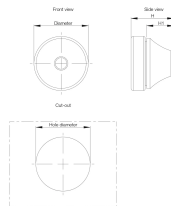


# Double Protection Cables Entry For Wall Mounted Enclosures, CED



The rubber cable gland is easy to mount, and, cables and pipes can be pulled through easily without tools, ensuring that the enclosure's protection degree is maintained.

## FEATURES

**Description:** The rubber grommet is very simple to use. The installation does not require tools, which in turn means lower work cost. The "pushout" membrane is a permanent seal until it is penetrated by a cable or pipe. Suitable for holes in materials of 0.5 to 4 mm thickness.

**Material:** EPDM, halogen free.

**Temperature resistance:** -40 °C to +110 °C.

**Finish:** RAL 7035.

**Protection:** IP 67.

The protection degree is maintained if the outside layer fails due to damage or external circumstances

The double layer sock is the optimal solution if the outside layer is exposed to external circumstances such as high pressure water

A potential disadvantage of the double layer however is that cables only pass through straight

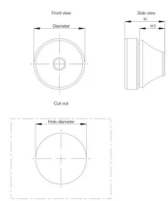
A single layer sock is available (CES) to allow cable passing through with an angle but the protection degree might be at risk if this single layer fails

SPECIFICATIONS

**Material:** EPDM  
**Color:** Light Gray  
**Color Code:** RAL 7035  
**Finish:** Smooth

Table 1/1						
Catalog Number	Height (H)	Width (W)	Depth (D)	Height 1 (H1)	Diameter	Cable Diameter Range
CED12	20mm	20mm	12.8mm	5.6mm	20mm	4 – 7mm
CED16	21mm	21mm	17.7mm	11mm	21mm	5 – 9mm
CED20	25.5mm	25.5mm	20mm	13.4mm	25.5mm	8 – 13mm
CED25	30.5mm	30.5mm	21.3mm	15.3mm	30.5mm	11 – 17mm
CED32	38.5mm	38.5mm	24.6mm	18.6mm	38.5mm	15 – 20mm
CED40	48.5mm	48.5mm	29.5mm	21.7mm	48.5mm	19 – 28mm
CED50	60.5mm	60.5mm	34.8mm	25mm	60.5mm	27 – 35mm

DIAGRAMS



WARNING

nVent products shall be installed and used only as indicated in nVent's product instruction sheets and training materials. Instruction sheets are available at [www.nvent.com](http://www.nvent.com) and from your nVent customer service representative. Improper installation, misuse, misapplication or other failure to completely follow nVent's instructions and warnings may cause product malfunction, property damage, serious bodily injury and death and/or void your warranty.



Our powerful portfolio of brands:

**CADDY   ERICO   HOFFMAN   ILSCO   SCHROFF   TRACHTE**