

nVent CADDY Speed Link SLK with Nail Gun Bracket



FEATURES

Complete system includes wire, locking device and concrete nail gun insert bracket

Clips onto nozzle of gas or battery-actuated nail guns allowing for hands-off installation at structure or from the floor using a pole

Longer leg angle bracket for tool clearance

Quickly and easily attaches to concrete, steel or composite metal decking

SPECIFICATIONS

Static Load Safety Factor:	5:1
Finish:	Electrogalvanized
Material:	Steel;Zinc Alloy;Polypropylene;Nylon
Complies With:	SMACNA HVAC-DCS

Table 1/1

Catalog Number	Article Number	Wire Rope Diameter	Wire Rope Length	A	B	Static Load
SLK2L3GBSF	197815	2 mm	3m	38 mm	25.5 mm	440N
SLK15L3GBSF	197813	1.5 mm	3m	38 mm	25.5 mm	195N
SLK15L2GBSF	197812	1.5 mm	2m	38 mm	25.5 mm	195N

CatalogNumber	Article Number	Wire Rope Diameter	Wire Rope Length	A	B	Static Load
SLK2L2GBSF	197814	2 mm	2m	38 mm	25.5 mm	440N

Thickness (T): 12.5 mm

Width (W): 19 mm

Height (H): 55 mm

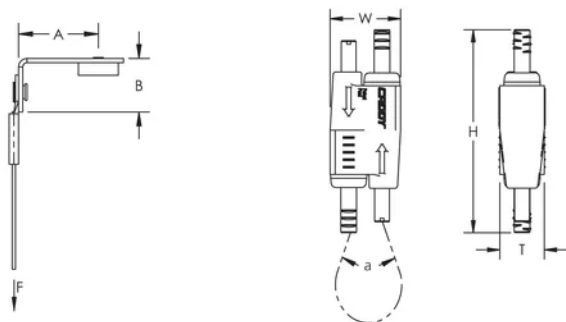
Angle (a): 90 ° Max

ADDITIONAL PRODUCT DETAILS

Static Load represents the static load of the nail gun insert assembly. Please consult with the nail manufacturer to evaluate the static load of the nail and type of concrete used for the installation. Maximum load is the lesser of the static load from the nail manufacturer or the published load for the assembly.

Nail gun insert is compatible with BeA® CN60-688ES, Hilti® BX 3, GX 3, DEWALT® Trak-It C3, SPIT® PULSA 40E, 800E, 700, 1000 or equivalent nailers.

DIAGRAMS



WARNING

nVent products shall be installed and used only as indicated in nVent's product instruction sheets and training materials. Instruction sheets are available at www.nvent.com and from your nVent customer service representative. Improper installation, misuse, misapplication or other failure to completely follow nVent's instructions and warnings may cause product malfunction, property damage, serious bodily injury and death and/or void your warranty.

North America

+1.800.753.9221

Option 1 – Customer Care

Option 2 – Technical

Support

Europe

Netherlands:

+31 800-0200135

France:

+33 800 901 793

Europe

Germany:

800 1890272

Other Countries:

+31 13 5835404

APAC

Shanghai:

+ 86 21 2412 1618/19

Sydney:

+61 2 9751 8500



Our powerful portfolio of brands:

CADDY

ERICO

HOFFMAN

ILSCO

SCHROFF

TRACHTE

