

T-Series Horizontal Sleeve, Top Fill



The top fill horizontal T-Series sleeve has vent holes to reduce air entrapment and help ensure proper filling of the sleeve.

FEATURES

Designed to connect horizontal reinforcing bars and angular reinforcing bars up to 45 degrees

Used to splice the same diameter bars

Works with saw cut, flame cut and sheared bars

Can be visually inspected after installation

Available with extended sleeve lengths

SPECIFICATIONS

Finish: Plain

Material: Steel

100% U.S. Domestic Content: Yes

Table 1/2

Catalog Number	Sleeve	Rebar Size, Metric	Rebar Size, US	Rebar Size, Canada	Diameter 1 (Ø1)	Diameter 2 (Ø2)
RBT6101HA	Standard Length	20 mm	#6	20M	38 mm	25 mm
RBT51012HA	Extended Length	16 mm	#5	15M	35 mm	22 mm
RBT7101HA	Standard Length	22 mm	#7		41 mm	29 mm
RBT1091HA	Standard Length	32 mm	#10		57 mm	41 mm

CatalogNumber	Sleeve	Rebar Size, Metric	Rebar Size, US	Rebar Size, Canada	Diameter 1(Ø1)	Diameter 2(Ø2)
RBT11101HA	Standard Length	36 mm	#11	35M	64 mm	44 mm
RBT61012HA	Extended Length	20 mm	#6	20M	38 mm	25 mm
RBT81011HA	Extended Length	25 mm	#8	25M	48 mm	32 mm
RBT81012HA	Extended Length	25 mm	#8	25M	48 mm	32 mm
RBT8101HA	Standard Length	25 mm	#8	25M	48 mm	32 mm
RBT91012HA	Extended Length	28 mm	#9	30M	54 mm	38 mm
RBT9101HA	Standard Length	28 mm	#9	30M	54 mm	38 mm
RBT71011HA	Extended Length	22 mm	#7		41 mm	29 mm
RBT10911HA	Extended Length	32 mm	#10		57 mm	41 mm
RBT111011HA	Extended Length	36 mm	#11	35M	64 mm	44 mm
RBT111012HA	Extended Length	36 mm	#11	35M	64 mm	44 mm
RBT121018HA	Extended Length	38 mm	#12		70 mm	48 mm
RBT12917HA	Standard Length	38 mm	#12		70 mm	48 mm
RBT141011HA	Extended Length	43 mm	#14	45M	76 mm	54 mm
RBT14101HA	Standard Length	43 mm	#14	45M	76 mm	54 mm
RBT1891HA	Standard Length	57 mm	#18	55M	95 mm	67 mm
RBT91011HA	Extended Length	28 mm	#9	30M	54 mm	38 mm

Table 2/2

Catalog Number	Length 1 (L1)	Length 2 (L2)	Length 3 (L3)	Unit Weight
----------------	---------------	---------------	---------------	-------------

RBT6101HA	127 mm	64 mm	20mm	0.63 kg
RBT51012HA	152 mm	76 mm		0.68 kg
RBT7101HA	127 mm	64 mm	20mm	0.69 kg
RBT1091HA	140 mm	70 mm	20mm	1.34 kg
RBT11101HA	152 mm	76 mm	20mm	1.93 kg
RBT61012HA	178 mm	89 mm	20mm	0.88 kg
RBT81011HA	152 mm	76 mm	20mm	1.38 kg
RBT81012HA	203 mm	89 mm	20mm	1.38 kg
RBT8101HA	127 mm	64 mm	20mm	0.98 kg
RBT91012HA	178 mm	89 mm	20mm	1.6 kg
RBT9101HA	127 mm	64 mm	20mm	1.14 kg
RBT71011HA	152 mm	76 mm	26mm	0.83 kg
RBT10911HA	165 mm	83 mm	26mm	1.59 kg
RBT111011HA	178 mm	89 mm	26mm	2.25 kg
RBT111012HA	203 mm	102 mm	26mm	2.57 kg
RBT121018HA	203 mm	102 mm	26mm	3.27 kg
RBT12917HA	178 mm	89 mm	26mm	2.86 kg
RBT141011HA	203 mm	102 mm	26mm	3.62 kg
RBT14101HA	178 mm	89 mm	26mm	3.17 kg

RBT1891HA	229 mm	114 mm	26mm	6.51 kg
RBT91011HA	152 mm	76 mm	26mm	1.37 kg

Designed to Meet: AASHTO;ABNT NBR 8548:1984;ACI 318 Type 1 (125% Specified Yield);ACI 318 Type 2 (Specified Tensile);ACI 349;ACI 359;AS3600

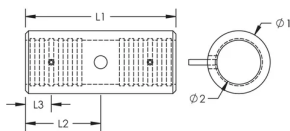
ADDITIONAL PRODUCT DETAILS

Prior to installation, please read and understand all of the detailed instructions and safety notices provided in the nVent LENTON Cadweld Rebar Splicing System Instruction Manual.

Sizes not shown may be available by special order. Contact your nVent LENTON representative for more information.

RBT51012HA does not have vent holes.

DIAGRAMS



WARNING

nVent products shall be installed and used only as indicated in nVent's product instruction sheets and training materials. Instruction sheets are available at www.nvent.com and from your nVent customer service representative. Improper installation, misuse, misapplication or other failure to completely follow nVent's instructions and warnings may cause product malfunction, property damage, serious bodily injury and death and/or void your warranty.

North America

+1.800.753.9221
Option 1 – Customer Care
Option 2 – Technical
Support

Europe

Netherlands:
+31 800-0200135
France:
+33 800 901 793

Europe

Germany:
800 1890272
Other Countries:
+31 13 5835404

APAC

Shanghai:
+ 86 21 2412 1618/19
Sydney:
+61 2 9751 8500



Our powerful portfolio of brands:

CADDY ERICO HOFFMAN ILSCO SCHROFF TRACHTE