

nVent LENTON Interlok Standard Grout-Fill Coupler, Plain



CERTIFICATIONS



FEATURES

Designed to splice the same diameter bars

Smaller bars can be installed into the over-sized cavity end if required

Over-sized cavity allows for greater field tolerance

Taper-threaded end helps prevent movement of the reinforcing bars and eliminate misalignment

Requires less grout than most competitive systems

SPECIFICATIONS

Material: Cast Iron

Finish: Plain

Table 1/3

Catalog Number	Article Number	Packaging	Rebar Size, Metric	Rebar Size, US	Rebar Size, Canada	Diameter 1 (Ø1)
LK5		Standard	16 mm	#5	15M	65 mm

CatalogNumber	Article Number	Packaging	Rebar Size, Metric	Rebar Size, US	Rebar Size, Canada	Diameter 1(Ø1)
LK5PKG		Bulk	16 mm	#5	15M	65 mm
LK16D		Standard	16 mm	#5	15M	59 mm
LK6	145580	Standard	20 mm	#6	20M	65 mm
LK6PKG		Bulk	20 mm	#6	20M	65 mm
LK7	145585	Standard	22 mm	#7		65 mm
LK7PKG		Bulk	22 mm	#7		65 mm
LK8PKG		Bulk	25 mm	#8	25M	68 mm
LK8	145590	Standard	25 mm	#8	25M	68 mm
LK20D		Standard	20 mm	#6	20M	62 mm
LK9	145595	Standard	28 mm	#9	30M	71 mm
LK9PKG		Bulk	28 mm	#9	30M	71 mm
LK25D		Standard	25 mm	#8	25M	68 mm
LK10	145600	Standard	32 mm	#10		76 mm
LK10PKG		Bulk	32 mm	#10		76 mm
LK11	145605	Standard	36 mm	#11	35M	80 mm
LK11PKG		Bulk	36 mm	#11	35M	80 mm
LK12		Standard	38 mm			94 mm
LK36D		Standard	36 mm	#11	35M	81 mm

CatalogNumber	Article Number	Packaging	Rebar Size, Metric	Rebar Size, US	Rebar Size, Canada	Diameter 1(Ø1)
LKT14	145611	Standard	43 mm	#14	45M	94 mm
LKT14PKG		Bulk	43 mm	#14	45M	94 mm
LK40		Standard	40 mm			94 mm

Table 2/3						
Catalog Number	Article Number	Diameter 2 (Ø2)	Length 1 (L1)	Length 2 (L2)	Bar Depth (BD)	Unit Weight
LK5		48 mm	200 mm	156 mm	22mm	1.98 kg
LK5PKG		48 mm	200 mm	156 mm	22mm	1.98 kg
LK16D		41 mm	201 mm	168 mm	24mm	1.69 kg
LK6	145580	48 mm	200 mm	156 mm	28mm	1.96 kg
LK6PKG		48 mm	200 mm	156 mm	28mm	1.96 kg
LK7	145585	48 mm	200 mm	156 mm	32mm	1.94 kg
LK7PKG		48 mm	200 mm	156 mm	32mm	1.94 kg
LK8PKG		51 mm	219 mm	178 mm	34mm	2.15 kg
LK8	145590	51 mm	219 mm	178 mm	34mm	2.15 kg
LK20D		45 mm	226 mm	178 mm	35mm	1.98 kg
LK9	145595	54 mm	248 mm	203 mm	38mm	2.44 kg
LK9PKG		54 mm	248 mm	203 mm	38mm	2.44 kg
LK25D		51 mm	228 mm	178 mm	40mm	2.26 kg

CatalogNumber	Article Number	Diameter 2(Ø2)	Length 1 (L1)	Length 2 (L2)	Bar Depth (BD)	Unit Weight
LK10	145600	59 mm	275 mm	229 mm	40mm	2.84 kg
LK10PKG		59 mm	275 mm	229 mm	40mm	2.84 kg
LK11	145605	62 mm	305 mm	251 mm	43mm	3.63 kg
LK11PKG		62 mm	305 mm	251 mm	43mm	3.63 kg
LK12		70 mm	386 mm	324 mm	44mm	7.14 kg
LK36D		62 mm	313 mm	251 mm	52mm	4.04 kg
LKT14	145611	70 mm	386 mm	324 mm	56mm	7.26 kg
LKT14PKG		70 mm	386 mm	324 mm	56mm	7.26 kg
LK40		70 mm	386 mm	324 mm	57mm	6.33 kg

Table 3/3

Catalog Number	Article Number	Certifications
LK5		
LK5PKG		
LK16D		
LK6	145580	IAPMO®-UES, LA City Approval
LK6PKG		
LK7	145585	IAPMO®-UES, LA City Approval
LK7PKG		
LK8PKG		

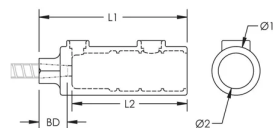
Catalog Number	Article Number	Certifications
LK8	145590	LA City Approval, IAPMO®-UES
LK20D		
LK9	145595	IAPMO®-UES, LA City Approval
LK9PKG		
LK25D		
LK10	145600	IAPMO®-UES, LA City Approval
LK10PKG		
LK11	145605	LA City Approval, IAPMO®-UES
LK11PKG		
LK12		
LK36D		
LKT14	145611	IAPMO®-UES, LA City Approval
LKT14PKG		
LK40		

ADDITIONAL PRODUCT DETAILS

Bar dimensions and weights listed may vary by region. Coupler sizes not shown may be available by special order. Contact your nVent LENTON representative for more information.

Prior to installation, please read and understand the detailed instructions and safety notices provided in the nVent LENTON Interlok Instruction Manual.

DIAGRAMS



WARNING

nVent products shall be installed and used only as indicated in nVent's product instruction sheets and training materials. Instruction sheets are available at www.nvent.com and from your nVent customer service representative. Improper installation, misuse, misapplication or other failure to completely follow nVent's instructions and warnings may cause product malfunction, property damage, serious bodily injury and death and/or void your warranty.

North America

+1.800.753.9221
Option 1 – Customer Care
Option 2 – Technical
Support

Europe

Netherlands:
+31 800-0200135
France:
+33 800 901 793

Europe

Germany:
800 1890272
Other Countries:
+31 13 5835404

APAC

Shanghai:
+ 86 21 2412 1618/19
Sydney:
+61 2 9751 8500



Our powerful portfolio of brands:

CADDY ERICO HOFFMAN ILSCO SCHROFF TRACHTE