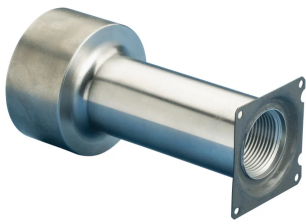


# nVent LENTON Form Saver with Large Anchor, D6SA



The nVent LENTON Form Saver with Large Anchor provides a method of splicing reinforcing bar in segmental concrete construction applications that have limited space or are severely congested. The large head significantly reduces required embedment length of the mating reinforcing bar.

Typically used in beam/column applications, the nVent LENTON Form Saver with Large Anchor easily attaches to the form panels. When the form is stripped, the protected threaded end of the coupler is exposed. Simply remove the protective cap and install the nVent LENTON taper threaded dowel bar. This system eliminates hooked bar congestion, protruding dowels and the need to drill holes in expensive formwork.

## FEATURES

Durable mounting plates allow for easy attachment to forms

Built-in thread cover or screw-in plug protects internal threads from concrete paste contamination

Head area exceeds 5x bar area (net 4x)

Coupler and anchor head are one piece

Available in customer specified lengths

## SPECIFICATIONS

**Finish:** Plain

**Material:** Steel

**100% U.S. Domestic Content:** Yes

Table 1/2

Catalog Number	Rebar Size, Metric	Rebar Size, US	Rebar Size, Canada	Diameter 1 (Ø1)	Diameter 2 (Ø2)	Height (H)
EL25D6SA0600	25 mm	#8	25M	35 mm	57 mm	57 mm
EL25D6SA0725	25 mm	#8	25M	35 mm	57 mm	57 mm

CatalogNumber	Rebar Size, Metric	Rebar Size, US	Rebar Size, Canada	Diameter 1(Ø1)	Diameter 2(Ø2)	Height (H)
EL25D6SA0800	25 mm	#8	25M	35 mm	57 mm	57 mm
EL25D6SA0900	25 mm	#8	25M	35 mm	57 mm	57 mm
EL25D6SA1800	25 mm	#8	25M	35 mm	57 mm	57 mm
EL32D6SA0600	32 mm	#10	32M	48 mm	76 mm	64 mm

Table 2/2

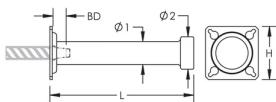
Catalog Number	Length (L)	Bar Depth (BD)	Unit Weight
EL25D6SA0600	152mm	34mm	1.56 kg
EL25D6SA0725	184mm	34mm	1.79 kg
EL25D6SA0800	203mm	34mm	1.94 kg
EL25D6SA0900	229mm	34mm	2.13 kg
EL25D6SA1800	457mm	34mm	3.84 kg
EL32D6SA0600	152mm	40mm	2.7 kg

**Designed to Meet:** AASHTO;ABNT NBR 8548:1984;ACI 318 Type 1 (125% Specified Yield);ACI 318 Type 2 (Specified Tensile);ACI 349;ACI 359;AS3600

## ADDITIONAL PRODUCT DETAILS

Bar dimensions and weights listed may vary by region. Coupler sizes not shown may be available by special order. Contact your nVent LENTON representative for more information.

## DIAGRAMS



**WARNING**

nVent products shall be installed and used only as indicated in nVent's product instruction sheets and training materials. Instruction sheets are available at [www.nvent.com](http://www.nvent.com) and from your nVent customer service representative. Improper installation, misuse, misapplication or other failure to completely follow nVent's instructions and warnings may cause product malfunction, property damage, serious bodily injury and death and/or void your warranty.

**North America**

+1.800.753.9221  
Option 1 – Customer Care  
Option 2 – Technical  
Support

**Europe**

Netherlands:  
+31 800-0200135  
France:  
+33 800 901 793

**Europe**

Germany:  
800 1890272  
Other Countries:  
+31 13 5835404

**APAC**

Shanghai:  
+ 86 21 2412 1618/19  
Sydney:  
+61 2 9751 8500



Our powerful portfolio of brands:

**CADDY   ERICO   HOFFMAN   ILSCO   SCHROFF   TRACHTE**