

# ELFB Taper Form Bolt



The ELFB taper bolt is used to firmly attach a nVent LENTON taper-threaded coupler onto formwork in precast and cast-in-place construction. This reusable form saving accessory allows forms to be pre-drilled with the correct spacing of the reinforcing steel, which speeds construction and allows the forms to be re-used on repetitive construction elements. This system can be used in conjunction with coupler boxes to eliminate the use of bend-out-boxes and also helps eliminate protruding dowel bars.

The screw-in bolt is designed to keep dirt, water and concrete slurry out of the coupler during the concrete pour. The bolt eliminates the need for form saving plates and simplifies the use of standard couplers in form saving applications.

## FEATURES

Multiple lengths available depending on form thickness

Used in both form saving and coupler box applications

Bar end protector included to protect the nVent LENTON taper thread

Durable, re-usable and long lasting

Saves time and money

## SPECIFICATIONS

**Material:** Steel

Table 1/2

Catalog Number	Nut Included	Form Thickness (FT)	Rebar Size, Metric	Rebar Size, US	Rebar Size, Canada	Length (L)
ELFB10X003	No	3 mm	10 mm	#3		21mm
ELFB12X003	No	3 mm	12 mm	#4	10M	21mm
ELFB10X020	Yes	3 - 20 mm	10 mm	#3		55mm

CatalogNumber	Nut Included	FormThickness (FT)	Rebar Size, Metric	Rebar Size, US	Rebar Size, Canada	Length (L)
ELFB12X010	No	3 - 10 mm	12 mm	#4	10M	28mm
ELFB14X003	No	3 mm	14 mm			25mm
ELFB10X040	Yes	3 - 40 mm	10 mm	#3		75mm
ELFB12X020	Yes	3 - 20 mm	12 mm	#4	10M	60mm
ELFB16X003	No	3 mm	16 mm	#5	15M	28mm
ELFB18X003	No	3 mm	18 mm			33mm
ELFB20X003	No	3 mm	20 mm	#6	20M	38mm
ELFB22X003	No	3 mm	22 mm	#7		40mm
ELFB25X003	No	3 mm	25 mm	#8	25M	43mm
ELFB28X003	No	3 mm	28 mm	#9	30M	45mm
ELFB30X003	No	3 mm	30 mm			55mm
ELFB32X003	No	3 mm	32 mm	#10		49mm
ELFB34X003	No	3 mm	34 mm			59mm
ELFB36X003	No	3 mm	36 mm	#11	35M	56mm
ELFB16X010	No	3 - 10 mm	16 mm	#5	15M	35mm
ELFB20X010	No	3 - 10 mm	20 mm	#6	20M	45mm
ELFB14X020	Yes	3 - 20 mm	14 mm			65mm
ELFB16X020	Yes	3 - 20 mm	16 mm	#5	15M	70mm

CatalogNumber	Nut Included	FormThickness (FT)	Rebar Size, Metric	Rebar Size, US	Rebar Size, Canada	Length (L)
ELFB18X020	Yes	3 - 20 mm	18 mm			75mm
ELFB20X020	Yes	3 - 20 mm	20 mm	#6	20M	90mm
ELFB22X020	Yes	3 - 20 mm	22 mm	#7		90mm
ELFB25X020	Yes	3 - 20 mm	25 mm	#8	25M	100mm
ELFB28X020	Yes	3 - 20 mm	28 mm	#9	30M	100mm
ELFB30X020	Yes	3 - 20 mm	30 mm			110mm
ELFB32X020	Yes	3 - 20 mm	32 mm	#10		110mm
ELFB34X020	Yes	3 - 20 mm	34 mm			120mm
ELFB36X020	Yes	3 - 20 mm	36 mm	#11	35M	115mm
ELFB12X040	Yes	3 - 40 mm	12 mm	#4	10M	80mm
ELFB14X040	Yes	3 - 40 mm	14 mm			85mm
ELFB16X040	Yes	3 - 40 mm	16 mm	#5	15M	90mm
ELFB18X040	Yes	3 - 40 mm	18 mm			95mm
ELFB20X040	Yes	3 - 40 mm	20 mm	#6	20M	105mm
ELFB22X040	Yes	3 - 40 mm	22 mm	#7		110mm
ELFB25X040	Yes	3 - 40 mm	25 mm	#8	25M	115mm
ELFB28X040	Yes	3 - 40 mm	28 mm	#9	30M	120mm
ELFB30X040	Yes	3 - 40 mm	30 mm			130mm

CatalogNumber	Nut Included	FormThickness (FT)	Rebar Size, Metric	Rebar Size, US	Rebar Size, Canada	Length (L)
ELFB32X040	Yes	3 - 40 mm	32 mm	#10		130mm
ELFB34X040	Yes	3 - 40 mm	34 mm			140mm
ELFB36X040	Yes	3 - 40 mm	36 mm	#11	35M	135mm

Table 2/2				
Catalog Number	Outer Diameter (OD)	Socket Width (SW)	Unit Weight	Number of Washers
ELFB10X003	12 mm	18mm	0.04 kg	2
ELFB12X003	14 mm	21mm	0.06 kg	2
ELFB10X020	12 mm	18mm	0.08 kg	1
ELFB12X010	14 mm	21mm	0.08 kg	4
ELFB14X003	16 mm	24mm	0.09 kg	2
ELFB10X040	12 mm	18mm	0.1 kg	1
ELFB12X020	14 mm	21mm	0.12 kg	1
ELFB16X003	20 mm	30mm	0.14 kg	2
ELFB18X003	20 mm	30mm	0.17 kg	2
ELFB20X003	24 mm	36mm	0.27 kg	2
ELFB22X003	24 mm	36mm	0.29 kg	2
ELFB25X003	30 mm	46mm	0.52 kg	2
ELFB28X003	30 mm	46mm	0.55 kg	2
ELFB30X003	30 mm	46mm	0.71 kg	4

Catalog Number	Outer Diameter (OD)	Socket Width (SW)	Unit Weight	Number of Washers
ELFB32X003	36 mm	55mm	0.92 kg	2
ELFB34X003	36 mm	55mm	1.16 kg	4
ELFB36X003	36 mm	55mm	1 kg	2
ELFB16X010	20 mm	30mm	0.2 kg	4
ELFB20X010	24 mm	36mm	0.36 kg	4
ELFB14X020	16 mm	24mm	0.17 kg	1
ELFB16X020	20 mm	30mm	0.3 kg	1
ELFB18X020	20 mm	30mm	0.32 kg	1
ELFB20X020	24 mm	36mm	0.54 kg	1
ELFB22X020	24 mm	36mm	0.55 kg	1
ELFB25X020	30 mm	46mm	1 kg	1
ELFB28X020	30 mm	46mm	1.06 kg	1
ELFB30X020	30 mm	46mm	1.11 kg	1
ELFB32X020	36 mm	55mm	1.73 kg	1
ELFB34X020	36 mm	55mm	1.81 kg	1
ELFB36X020	36 mm	55mm	1.81 kg	1
ELFB12X040	14 mm	21mm	0.14 kg	1
ELFB14X040	16 mm	24mm	0.2 kg	1

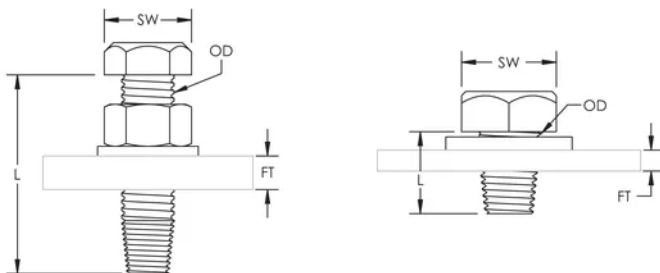
Catalog Number	Outer Diameter (OD)	Socket Width (SW)	Unit Weight	Number of Washers
ELFB16X040	20 mm	30mm	0.34 kg	1
ELFB18X040	20 mm	30mm	0.36 kg	1
ELFB20X040	24 mm	36mm	0.58 kg	1
ELFB22X040	24 mm	36mm	0.62 kg	1
ELFB25X040	30 mm	46mm	1.09 kg	1
ELFB28X040	30 mm	46mm	1.16 kg	1
ELFB30X040	30 mm	46mm	1.21 kg	1
ELFB32X040	36 mm	55mm	1.87 kg	1
ELFB34X040	36 mm	55mm	1.95 kg	1
ELFB36X040	36 mm	55mm	1.95 kg	1

## ADDITIONAL PRODUCT DETAILS

Length dimension is for reference only.

Sizes not shown may be available by special order. Contact your nVent LENTON representative for more information.

## DIAGRAMS



**WARNING**

nVent products shall be installed and used only as indicated in nVent's product instruction sheets and training materials. Instruction sheets are available at [www.nvent.com](http://www.nvent.com) and from your nVent customer service representative. Improper installation, misuse, misapplication or other failure to completely follow nVent's instructions and warnings may cause product malfunction, property damage, serious bodily injury and death and/or void your warranty.

**North America**

+1.800.753.9221  
Option 1 – Customer Care  
Option 2 – Technical  
Support

**Europe**

Netherlands:  
+31 800-0200135  
France:  
+33 800 901 793

**Europe**

Germany:  
800 1890272  
Other Countries:  
+31 13 5835404

**APAC**

Shanghai:  
+ 86 21 2412 1618/19  
Sydney:  
+61 2 9751 8500



Our powerful portfolio of brands:

**CADDY   ERICO   HOFFMAN   ILSCO   SCHROFF   TRACHTE**