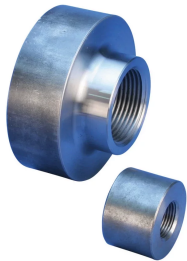


# D6 Mechanical Anchor, Plain



## FEATURES

Replaces conventional hooked reinforcing bar

Simplifies reinforcing bar placement and lowers placing costs

Head area exceeds 5x bar area (net 4x)

## SPECIFICATIONS

**Finish:** Plain

**Material:** Steel

Table 1/2

Catalog Number	Rebar Size, Metric	Rebar Size, US	Rebar Size, Canada	Diameter 1 (Ø1)	Diameter 2 (Ø2)	Length 1 (L1)
EL12D6N	12 mm	#4	10M	35 mm		14 mm
EL16D6N	16 mm	#5	15M	38 mm		22 mm
EL20D6N	20 mm	#6	20M	48 mm		29 mm
EL22D6N	22 mm	#7		51 mm		32 mm
EL25D6N	25 mm	#8	25M	57 mm		35 mm

CatalogNumber	Rebar Size, Metric	Rebar Size, US	Rebar Size, Canada	Diameter 1(Ø1)	Diameter 2(Ø2)	Length 1 (L1)
EL28D6N	28 mm	#9	30M	70 mm		38 mm
EL40D6N	40 mm			90 mm	80 mm	55 mm
EL43TD6N	43 mm	#14	45M	100 mm	80 mm	54 mm
EL32D6N	32 mm	#10		76 mm		40 mm
EL36D6N	36 mm	#11	35M	83 mm		43 mm

Table 2/2

Catalog Number	Length 2 (L2)	Unit Weight
EL12D6N		0.1 kg
EL16D6N		0.17 kg
EL20D6N		0.34 kg
EL22D6N		0.43 kg
EL25D6N		0.59 kg
EL28D6N		0.99 kg
EL40D6N	25 mm	2.26 kg
EL43TD6N	25 mm	2.44 kg
EL32D6N		1.2 kg
EL36D6N		1.51 kg

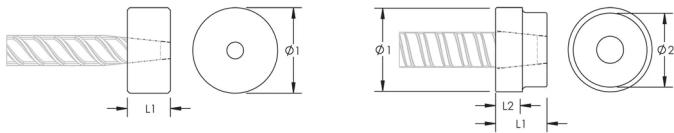
**Designed to Meet:** ACI 318;AS3600;ASTM A970

ADDITIONAL PRODUCT DETAILS

Bar dimensions and weights listed may vary by region. Coupler sizes not shown may be available by special order. Contact your nVent LENTON representative for more information.

Thread does not need to be flush with end of nVent LENTON Terminator. Thread may be +/- 2 threads from backside of coupler.

DIAGRAMS



WARNING

nVent products shall be installed and used only as indicated in nVent's product instruction sheets and training materials. Instruction sheets are available at [www.nvent.com](http://www.nvent.com) and from your nVent customer service representative. Improper installation, misuse, misapplication or other failure to completely follow nVent's instructions and warnings may cause product malfunction, property damage, serious bodily injury and death and/or void your warranty.

North America

+1.800.753.9221  
Option 1 – Customer Care  
Option 2 – Technical  
Support

Europe

Netherlands:  
+31 800-0200135  
France:  
+33 800 901 793

Europe

Germany:  
800 1890272  
Other Countries:  
+31 13 5835404

APAC

Shanghai:  
+ 86 21 2412 1618/19  
Sydney:  
+61 2 9751 8500



Our powerful portfolio of brands:

CADDY   ERICO   HOFFMAN   ILSCO   SCHROFF   TRACHTE