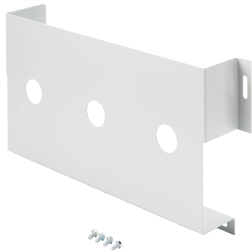


# ProLine Steel Data Pocket



Steel Data Pocket fastens to the bottom of the door. Door Bar Grid Straps (purchased separately) must be used to change the vertical mounting position of the Data Pocket.

## FEATURES

---

Steel Data Pocket fastens to the bottom of the door

Door Bar Grid Straps (purchased separately) must be used to change the vertical mounting position of the data pocket

SPECIFICATIONS

Table 1/1						
Catalog Number	Article Number	Material	Color	Color Code	Finish	Thickness
PDP1	13927	Mild Steel	Light Gray	RAL 7035	Powder Coated	1.52mm

WARNING

nVent products shall be installed and used only as indicated in nVent's product instruction sheets and training materials. Instruction sheets are available at [www.nvent.com](http://www.nvent.com) and from your nVent customer service representative. Improper installation, misuse, misapplication or other failure to completely follow nVent's instructions and warnings may cause product malfunction, property damage, serious bodily injury and death and/or void your warranty.



Our powerful portfolio of brands:

CADDY   ERICO   HOFFMAN   ILSCO   SCHROFF   TRACHTE