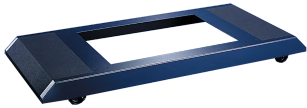


## ProLine Mobile Base



Mobile Bases fit 600- and 800-mm wide frames. They extend beyond the front and rear of 600-mm cabinets to provide enhanced stability. Provides front extension only on 800-mm cabinets. The base fastens to the underside of the frame and provides integral mounting of furnished casters. The front and rear top surfaces of the base are trimmed with black rubber mats 3-mm thick.

### FEATURES

---

Casters and mounting hardware are furnished.

Four non-locking casters provide a maximum load-bearing capacity of 1000 lb. (453.6 kg).

SPECIFICATIONS

- Thickness: 3.4mm
- Color: Jet Black
- Finish: Powder Coated
- Color Code: RAL 9005

Table 1/1			
Catalog Number	Article Number	Material	Quick Ship
PMB66	37889	Mild Steel	No
PMB69	37879	Mild Steel	No
PMB86	37869	Mild Steel	No
PMB89	37859	Mild Steel	No

ADDITIONAL PRODUCT DETAILS

Exercise care when using casters to move the enclosure. Avoid large cracks, floor displacement, seams, gravel and any other obstruction. Never use casters while transporting an enclosure by truck on roadways.

Avoid tipping and damage to the enclosure and its contents by slowly moving the enclosure on its casters across smooth, flat flooring

WARNING

nVent products shall be installed and used only as indicated in nVent's product instruction sheets and training materials. Instruction sheets are available at [www.nvent.com](http://www.nvent.com) and from your nVent customer service representative. Improper installation, misuse, misapplication or other failure to completely follow nVent's instructions and warnings may cause product malfunction, property damage, serious bodily injury and death and/or void your warranty.



Our powerful portfolio of brands:

**CADDY   ERICO   HOFFMAN   ILSCO   SCHROFF   TRACHTE**