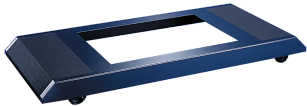


## ProLine G2 Mobile Base



Mobile bases include casters and extend beyond the front and rear of 600- and 800-mm wide modular enclosures to provide enhanced stability.

### FEATURES

---

The front and rear top surfaces of the base are trimmed with 3-mm thick black rubber mats

Four non-locking casters provide a maximum load-bearing capacity of 1000 lb. (453.6 kg)

Available as standard product for 600- and 800-mm wide frames

The base fastens to the underside of the frame and provides integral mounting of furnished casters

Casters and mounting hardware are furnished

## SPECIFICATIONS

**Thickness:** 3.4mm  
**Color:** Jet Black  
**Finish:** Powder Coated  
**Color Code:** RAL 9005

Table 1/1

Catalog Number	Article Number	Material	Quick Ship
P2BM64	32823	Mild Steel	No
P2BM65	32824	Mild Steel	No
P2BM66	32825	Mild Steel	No
P2BM68	32826	Mild Steel	No
P2BM810	32834	Mild Steel	No
P2BM84	32827	Mild Steel	No
P2BM85	32828	Mild Steel	No
P2BM86	32832	Mild Steel	No
P2BM88	32833	Mild Steel	No

## ADDITIONAL PRODUCT DETAILS

Exercise care when using casters to move the enclosure. Avoid large cracks, floor displacement, seams, gravel and any other obstruction. Never use casters while transporting an enclosure by truck on roadways.

Avoid tipping and damage to the enclosure and its contents by slowly moving the enclosure on its casters across smooth, flat flooring

## WARNING

nVent products shall be installed and used only as indicated in nVent's product instruction sheets and training materials. Instruction sheets are available at [www.nvent.com](http://www.nvent.com) and from your nVent customer service representative. Improper installation, misuse, misapplication or other failure to completely follow nVent's instructions and warnings may cause product malfunction, property damage, serious bodily injury and death and/or void your warranty.



Our powerful portfolio of brands:

**CADDY   ERICO   HOFFMAN   ILSCO   SCHROFF   TRACHTE**