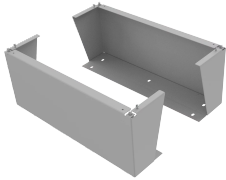


## ProLine G2 Floor Stand Kit



The Floor Stand Kit mounts depth-wise on the ProLine G2 enclosure, securing both through the frames drain hole(s) and the corner block(s). The Floor Stand Kit is used to elevate the enclosure off the ground by 300 mm (~1ft). Please note at this time Hoffman is only offering a single 800 mm deep model, please consult the factory if a different depth is required.

### FEATURES

---

Elevates the enclosure off the ground by 300 mm (~1ft)

For use with 800 mm deep enclosures and frames

SPECIFICATIONS

Table 1/1						
Catalog Number	Article Number	Thickness	Finish	Color	Color Code	Material
P2AFSK8	36563	2.66mm	Powder Coated	Light Gray	RAL 7035	Mild Steel

WARNING

nVent products shall be installed and used only as indicated in nVent's product instruction sheets and training materials. Instruction sheets are available at [www.nvent.com](http://www.nvent.com) and from your nVent customer service representative. Improper installation, misuse, misapplication or other failure to completely follow nVent's instructions and warnings may cause product malfunction, property damage, serious bodily injury and death and/or void your warranty.



Our powerful portfolio of brands:

CADDY   ERICO   HOFFMAN   ILSCO   SCHROFF   TRACHTE