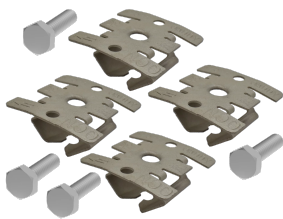


# Quick Channel Nut Kit (QCN), 0.72x1.5x1.5, Armour, Mild Steel

## CATALOG NUMBER

### 4QCNKIT



In collaboration with nVent CADDY, nVent HOFFMAN is proud to offer an enclosure mounting kit utilizing the CADDY Quick Channel Nut (QCN). For enclosure installation on both shallow and deep profile strut with standard 1-5/8-inch (41mm) widths, easy to use QCNs with their “push-to-install” design replace finicky strut channel spring nuts. Rapid and reliable installation through the following simple steps: push QCNs into strut, align QCNs with enclosure, and secure enclosure to QCNs with supplied bolts.

## FEATURES

Each 4QCNKIT contains a quantity of four QCNs and four steel bolts with a 1/4-20 thread, maximum torque of 10 ft-lbs (44Nm)

QCN is constructed from spring steel and features the nVent CADDY Armour finish

Consult QCN configuration images below showing forces F1, F2, and F3, and stated acceptability for a given enclosure in the A90P1 enclosure tables

## PRODUCT ATTRIBUTES

Article Number: 58284

Height (H): 18mm

Width (W): 38mm

Depth (D): 38mm

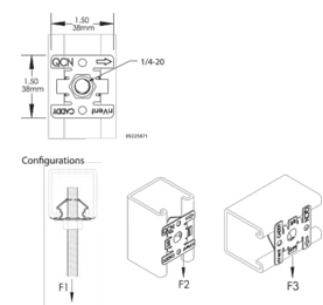
Material: Mild Steel

Finish: Armour

Nominal Fastener Size: 1/4-20

Package Quantity: 4

## DIAGRAMS



## WARNING

nVent products shall be installed and used only as indicated in nVent's product instruction sheets and training materials. Instruction sheets are available at [www.nvent.com](http://www.nvent.com) and from your nVent customer service representative. Improper installation, misuse, misapplication or other failure to completely follow nVent's instructions and warnings may cause product malfunction, property damage, serious bodily injury and death and/or void your warranty.



Our powerful portfolio of brands:

**CADDY   ERICO   HOFFMAN   ILSCO   SCHROFF   TRACHTE**