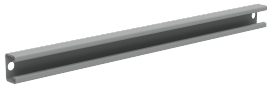


# A17 Double Door Internal Unistrut Mounting Kit



Bolt internal unistrut channels into A17 enclosures with included mounting hardware. Unistruts are required for installing nVent HOFFMAN Freestand panels and accessories in two-door A17 fiberglass enclosures. HOFFMAN A17SUPPORT2 plate must also be installed to secure unistrut. Kit includes 8 unistruts.

## FEATURES

Unistruts are required for installing nVent HOFFMAN Freestand panels and accessories in two-door A17 fiberglass enclosures.

HOFFMAN A17SUPPORT2 plate must also be installed to secure unistrut.

Kit includes 8 unistruts.

SPECIFICATIONS

Table 1/1						
Catalog Number	Article Number	Material	Finish	Color	Color Code	Thickness
A17UNISTRUT	13576	Mild Steel	Powder Coated	Gray	ANSI 61	2.5mm

WARNING

nVent products shall be installed and used only as indicated in nVent's product instruction sheets and training materials. Instruction sheets are available at [www.nvent.com](http://www.nvent.com) and from your nVent customer service representative. Improper installation, misuse, misapplication or other failure to completely follow nVent's instructions and warnings may cause product malfunction, property damage, serious bodily injury and death and/or void your warranty.



Our powerful portfolio of brands:

CADDY   ERICO   HOFFMAN   ILSCO   SCHROFF   TRACHTE