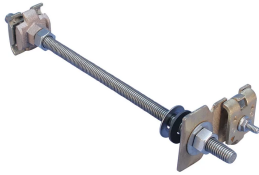


Through Wall/Roof Assembly, Parallel Conductor to Bonding Lug



CERTIFICATIONS



FEATURES

Allows for lightning protection conductors to be concealed in ceiling or walls

SPECIFICATIONS

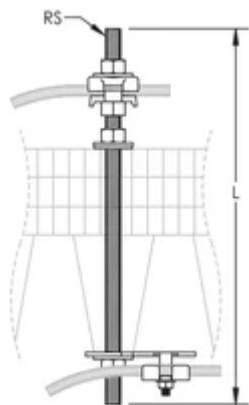
Table 1/1

Catalog Number	Conductor Size, UL	Material	Connection Material, Bonding Lug	Connection Material, Parallel Conductor	Rod Length (L)	Unit Weight
LPC620	Class 1 - Class 2 (4/0 Max)	Copper, Stainless Steel 18-8 (EN 1.4305)	Copper	Copper	304.8mm	0.72 kg

ADDITIONAL PRODUCT DETAILS

Always consult the roof manufacturer or owner for proper flashing materials.

DIAGRAMS



WARNING

nVent products shall be installed and used only as indicated in nVent's product instruction sheets and training materials. Instruction sheets are available at www.nvent.com and from your nVent customer service representative. Improper installation, misuse, misapplication or other failure to completely follow nVent's instructions and warnings may cause product malfunction, property damage, serious bodily injury and death and/or void your warranty.

North America

+1.800.753.9221
Option 1 – Customer Care
Option 2 – Technical
Support

Europe

Netherlands:
+31 800-0200135
France:
+33 800 901 793

Europe

Germany:
800 1890272
Other Countries:
+31 13 5835404

APAC

Shanghai:
+ 86 21 2412 1618/19
Sydney:
+61 2 9751 8500



Our powerful portfolio of brands:

CADDY ERICO HOFFMAN ILSCO SCHROFF TRACHTE