

# nVent ERICO Ericontact Removal Kit



## FEATURES

Enables nVent ERICO Ericontact Rail Contact to be removed during maintenance activities

Works on HSKE Manual Insertion Tool or on ASKE Battery-Powered Insertion Tool

## SPECIFICATIONS

**Material:** Steel

Table 1/2

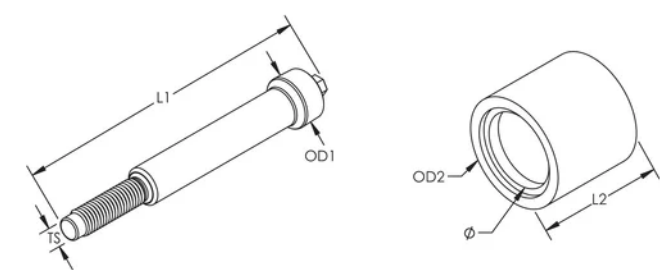
Catalog Number	Article Number	Product	nVent ERICO Ericontact	Adaptor	Length 1 (L1)	Length 2 (L2)
PULLOUTSET	716336	Bush and Mandrel	SK19, DSK19, SK22, DSK22	None Required	106 mm	34 mm
PULLOUTBSH	716325	Bush Only	SK19, DSK19, SK22, DSK22	None Required		34 mm
MDRLPULL	716340	Mandrel Only	SK19, DSK19, SK22, DSK22	None Required	106 mm	

Table 2/2

Catalog Number	Article Number	Outer Diameter 1 (OD1)	Outer Diameter 2 (OD2)	Diameter (Ø)	Thread Size (TS)
PULLOUTSET	716336	17 mm	38 mm	26 mm	M9
PULLOUTBSH	716325		38 mm	26 mm	

Catalog Number	Article Number	Outer Diameter 1 (OD1)	Outer Diameter 2 (OD2)	Diameter (Ø)	Thread Size (TS)
MDRLPULL	716340	17 mm			M9

### DIAGRAMS



### WARNING

nVent products shall be installed and used only as indicated in nVent's product instruction sheets and training materials. Instruction sheets are available at [www.nvent.com](http://www.nvent.com) and from your nVent customer service representative. Improper installation, misuse, misapplication or other failure to completely follow nVent's instructions and warnings may cause product malfunction, property damage, serious bodily injury and death and/or void your warranty.

#### North America

+1.800.753.9221  
 Option 1 – Customer Care  
 Option 2 – Technical Support

#### Europe

Netherlands:  
 +31 800-0200135  
 France:  
 +33 800 901 793

#### Europe

Germany:  
 800 1890272  
 Other Countries:  
 +31 13 5835404

#### APAC

Shanghai:  
 + 86 21 2412 1618/19  
 Sydney:  
 +61 2 9751 8500



Our powerful portfolio of brands:

CADDY   ERICO   HOFFMAN   ILSCO   SCHROFF   TRACHTE