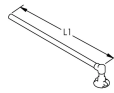
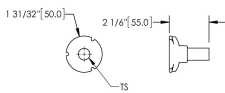


# Earthbridge DB, One Stud, Solid Round Steel, 90° Angle



Earthbridges are assemblies made from a high-quality conductive earthpoint (connecting terminal) and various types of conductors. The nVent ERICO Cadweld exothermic connection process is used to combine them together, forming a highly corrosion resistant and long-lasting assembly.

## DIAGRAMS



## FEATURES

Long-lasting design

Low ground resistance and impedance

Superior electrical conductivity and resistance to corrosion

Electrically and mechanically robust and reliable

Easy to install

## SPECIFICATIONS

<b>Material:</b>	Copper;Steel
<b>Earthpoint Type:</b>	DB, One Stud
<b>Conductor Type:</b>	Solid Round Steel, 90° Angle

Table 1/2

Catalog Number	Article Number	Type	Conductor Size	Length (L)	Diameter (Ø)	Thread Size (TS)
----------------	----------------	------	----------------	------------	--------------	------------------

DB10K	166130	DBKP	16 mm Diameter Solid	500mm	50 mm	M10
DB10KBLK	166130B	DBKP	16 mm Diameter Solid	500mm	50 mm	M10
DB12K	166160	DBKP	16 mm Diameter Solid	500mm	50 mm	M12
DB12KBLK	166160B	DBKP	16 mm Diameter Solid	500mm	50 mm	M12
DB16K	166190	DBKP	16 mm Diameter Solid	500mm	50 mm	M16
DB10K16P050H		DBKP	16 mm Diameter Solid	500mm	50 mm	M10
DB10K16P050H G		DBKP	16 mm Diameter Solid	500mm	50 mm	M10
DB12K16P050H		DBKP	16 mm Diameter Solid	500mm	50 mm	M12
DB12K16P050H G		DBKP	16 mm Diameter Solid	500mm	50 mm	M12
DB16K16P050H		DBKP	16 mm Diameter Solid	500mm	50 mm	M16

Table 2/2						
Catalog Number	Article Number	Angle (a)	Rebar Assembly Type	Hardware Included	Earthbridge Application	Complies With
DB10K	166130	90 °	Arc Welding to Rebar	Yes	Tunnel	EN IEC® 62561-1 Class H 100kA
DB10KBLK	166130B	90 °	Arc Welding to Rebar	Yes	Tunnel	EN IEC® 62561-1 Class H 100kA
DB12K	166160	90 °	Arc Welding to Rebar	Yes	Tunnel	EN IEC® 62561-1 Class H 100kA
DB12KBLK	166160B	90 °	Arc Welding to Rebar	Yes	Tunnel	EN IEC® 62561-1 Class H 100kA
DB16K	166190	90 °	Arc Welding to Rebar	Yes	Tunnel	EN IEC® 62561-1 Class H 100kA

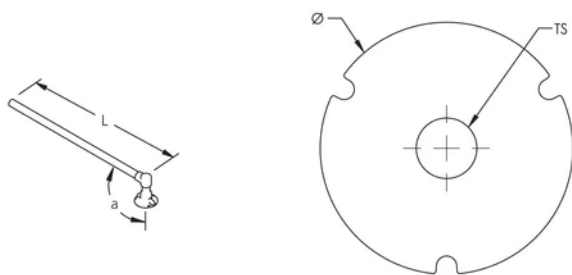
CatalogNumber	Article Number	Angle (a)	RebarAssembly Type	Hardware Included	Earthbridge Application	Complies With
DB10K16P050H		90 °	Arc Welding to Rebar	Yes	Tunnel	EN IEC® 62561-1 Class H 100kA
DB10K16P050H G		90 °	Arc Welding to Rebar	Yes	Tunnel	EN IEC® 62561-1 Class H 100kA
DB12K16P050H		90 °	Arc Welding to Rebar	Yes	Tunnel	EN IEC® 62561-1 Class H 100kA
DB12K16P050H G		90 °	Arc Welding to Rebar	Yes	Tunnel	EN IEC® 62561-1 Class H 100kA
DB16K16P050H		90 °	Arc Welding to Rebar	Yes	Tunnel	EN IEC® 62561-1 Class H 100kA

## ADDITIONAL PRODUCT DETAILS

Includes (1) brass bolt, (1) brass washer, (1) plastic cap, and (1) protective label.

DB-16-C-70-S-050-C		
DB	Earth Point	DB: 1 hole BT: 2 holes BF: 4 holes LU: M16 lug TA: tape
16	Thread Size	10: M10 12: M12 16: M16 40: Tape 40x5mm 30: Tape 30x4mm
C	Conductor Type	K: Steel Rond C: Y/G Cable T: Steel Bar F: Steel Bar 4mm N: NYY-O Cable H: N2XH-0 Cable
70	Conductor Size	12: D12mm 16: D16mm 30: 30x4mm 40: 40x5mm 50: 50mm <sup>2</sup> 70: 70mm <sup>2</sup> 95: 95mm <sup>2</sup>
S	Conductor Angle	S: 0° P: 90° A: 45°
050	Length (cm)	xxx
x	Termination (option if cable)	SR: Solid Round EP: Earthpoint perpendicular ES: Earthpoint straight TA: Tape of 100mm TP: Tape of 150mm LU: M16 lug
x	Bolts & Washer	- : No Hardware H: With Hardware
C	Packaging	- : by unit (Made-to-Stock) C: 5 pieces (Made-to-Order) G: 25 pieces (Made-to-Order)

## DIAGRAMS



**WARNING**

nVent products shall be installed and used only as indicated in nVent's product instruction sheets and training materials. Instruction sheets are available at [www.nvent.com](http://www.nvent.com) and from your nVent customer service representative. Improper installation, misuse, misapplication or other failure to completely follow nVent's instructions and warnings may cause product malfunction, property damage, serious bodily injury and death and/or void your warranty.

**⚠ WARNING:** This product can expose you to chemicals including lead, which is known to the State of California to cause cancer and birth defects or other reproductive harm. For more information go to [www.P65Warnings.ca.gov](http://www.P65Warnings.ca.gov).

**North America**

+1.800.753.9221  
Option 1 – Customer Care  
Option 2 – Technical  
Support

**Europe**

Netherlands:  
+31 800-0200135  
France:  
+33 800 901 793

**Europe**

Germany:  
800 1890272  
Other Countries:  
+31 13 5835404

**APAC**

Shanghai:  
+ 86 21 2412 1618/19  
Sydney:  
+61 2 9751 8500



Our powerful portfolio of brands:

**CADDY   ERICO   HOFFMAN   ILSCO   SCHROFF   TRACHTE**