

# Earthbridge DB, One Stud, Insulated Cable, Straight



Earthbridges are assemblies made from a high-quality conductive earthpoint (connecting terminal) and various types of conductors. The nVent ERICO Cadweld exothermic connection process is used to combine them together, forming a highly corrosion resistant and long-lasting assembly.

## DIAGRAMS



## FEATURES

Long-lasting design

Low ground resistance and impedance

Superior electrical conductivity and resistance to corrosion

Electrically and mechanically robust and reliable

Easy to install

## SPECIFICATIONS

**Material:** Copper  
**Earthpoint Type:** DB, One Stud

Table 1/2

Catalog Number	Article Number	Type	Conductor Type	Conductor Size	Length (L)	Diameter (Ø)
----------------	----------------	------	----------------	----------------	------------	--------------

DB10C5005	166480	DBCS	Yellow-Green Insulated Cable, Straight	50 mm <sup>2</sup> Stranded	500mm	50 mm
DB10C501	166490	DBCS	Yellow-Green Insulated Cable, Straight	50 mm <sup>2</sup> Stranded	1000mm	50 mm
DB10C502	166500	DBCS	Yellow-Green Insulated Cable, Straight	50 mm <sup>2</sup> Stranded	2000mm	50 mm
DB10C701000		DBCS	Yellow-Green Insulated Cable, Straight	70 mm <sup>2</sup> Stranded	1000mm	50 mm
DB10C701500		DBCS	Yellow-Green Insulated Cable, Straight	70 mm <sup>2</sup> Stranded	1500mm	50 mm
DB10C702000		DBCS	Yellow-Green Insulated Cable, Straight	70 mm <sup>2</sup> Stranded	2000mm	50 mm
DB10C70500		DBCS	Yellow-Green Insulated Cable, Straight	70 mm <sup>2</sup> Stranded	500mm	50 mm
DB10C50S050H		DBCS	Yellow-Green Insulated Cable, Straight	50 mm <sup>2</sup> Stranded	500mm	50 mm
DB10C50S100HC		DBCS	Yellow-Green Insulated Cable, Straight	50 mm <sup>2</sup> Stranded	1000mm	50 mm
DB10C70S050H		DBCS	Yellow-Green Insulated Cable, Straight	70 mm <sup>2</sup> Stranded	500mm	50 mm
DB16N70S050C		DBNS	NY Y-0 cable	70 mm <sup>2</sup> Stranded	500mm	50 mm
DB16N70S100C		DBNS	NY Y-0 cable	70 mm <sup>2</sup> Stranded	1000mm	50 mm
DB16N95S050C		DBNS	NY Y-0 cable	95 mm <sup>2</sup> Stranded	500mm	50 mm
DB16N95S100C		DBNS	NY Y-0 cable	95 mm <sup>2</sup> Stranded	1000mm	50 mm

Table 2/2

Catalog Number	Article Number	Thread Size (TS)	Rebar Assembly Type	Hardware Included	Earthbridge Application	Complies With
----------------	----------------	------------------	---------------------	-------------------	-------------------------	---------------

DB10C5005	166480	M10	Cadweld or Clamp	Yes	Building	EN IEC® 62561-1 Class H 100kA
DB10C501	166490	M10	Cadweld or Clamp	Yes	Building	EN IEC® 62561-1 Class H 100kA
DB10C502	166500	M10	Cadweld or Clamp	Yes	Building	EN IEC® 62561-1 Class H 100kA
DB10C701000		M10	Cadweld or Clamp	Yes	Building	EN IEC® 62561-1 Class H 100kA
DB10C701500		M10	Cadweld or Clamp	Yes	Building	EN IEC® 62561-1 Class H 100kA
DB10C702000		M10	Cadweld or Clamp	Yes	Building	EN IEC® 62561-1 Class H 100kA
DB10C70500		M10	Cadweld or Clamp	Yes	Building	EN IEC® 62561-1 Class H 100kA
DB10C50S050H		M10	Cadweld or Clamp	Yes	Building	EN IEC® 62561-1 Class H 100kA
DB10C50S100H C		M10	Cadweld or Clamp	Yes	Building	EN IEC® 62561-1 Class H 100kA
DB10C70S050H		M10	Cadweld or Clamp	Yes	Building	EN IEC® 62561-1 Class H 100kA
DB16N70S050C		M16	Cadweld or Clamp	No	Building	RIL 997.02050A01 (Construction 1 Ik 25 kA), EN IEC® 62561-1 Class H 100kA
DB16N70S100C		M16	Cadweld or Clamp	No	Building	RIL 997.02050A01 (Construction 1 Ik 25 kA), EN IEC® 62561-1 Class H 100kA

DB16N95S050C		M16	Cadweld or Clamp	No	Building	RIL 997.02050A01 (Construction 2 Ik > 25 kA), EN IEC® 62561-1 Class H 100kA
DB16N95S100C		M16	Cadweld or Clamp	No	Building	RIL 997.02050A01 (Construction 2 Ik > 25 kA), EN IEC® 62561-1 Class H 100kA

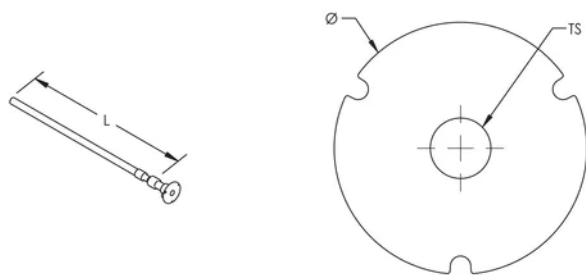
## ADDITIONAL PRODUCT DETAILS

---

Includes (1) brass bolt, (1) brass washer, (1) plastic cap, and (1) protective label.

DB-16-C-70-S-050-C		
DB	Earth Point	DB: 1 hole BT: 2 holes BF: 4 holes LU: M16 lug TA: tape
16	Thread Size	10: M10 12: M12 16: M16 40: Tape 40x5mm 30: Tape 30x4mm
C	Conductor Type	K: Steel Rond C: Y/G Cable T: Steel Bar F: Steel Bar 4mm N: NYY-O Cable H: N2XH-0 Cable
70	Conductor Size	12: D12mm 16: D16mm 30: 30x4mm 40: 40x5mm 50: 50mm <sup>2</sup> 70: 70mm <sup>2</sup> 95: 95mm <sup>2</sup>
S	Conductor Angle	S: 0° P: 90° A: 45°
050	Length (cm)	xxx
x	Termination (option if cable)	SR: Solid Round EP: Earthpoint perpendicular ES: Earthpoint straight TA: Tape of 100mm TP: Tape of 150mm LU: M16 lug
x	Bolts & Washer	- : No Hardware H: With Hardware
C	Packaging	- : by unit (Made-to-Stock) C: 5 pieces (Made-to-Order) G: 25 pieces (Made-to-Order)

## DIAGRAMS



**WARNING**

nVent products shall be installed and used only as indicated in nVent's product instruction sheets and training materials. Instruction sheets are available at [www.nvent.com](http://www.nvent.com) and from your nVent customer service representative. Improper installation, misuse, misapplication or other failure to completely follow nVent's instructions and warnings may cause product malfunction, property damage, serious bodily injury and death and/or void your warranty.

**⚠ WARNING:** This product can expose you to chemicals including lead, which is known to the State of California to cause cancer and birth defects or other reproductive harm. For more information go to [www.P65Warnings.ca.gov](http://www.P65Warnings.ca.gov).

**North America**

+1.800.753.9221  
Option 1 – Customer Care  
Option 2 – Technical  
Support

**Europe**

Netherlands:  
+31 800-0200135  
France:  
+33 800 901 793

**Europe**

Germany:  
800 1890272  
Other Countries:  
+31 13 5835404

**APAC**

Shanghai:  
+ 86 21 2412 1618/19  
Sydney:  
+61 2 9751 8500



Our powerful portfolio of brands:

**CADDY   ERICO   HOFFMAN   ILSCO   SCHROFF   TRACHTE**