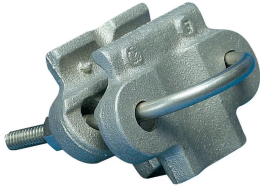


# Cast U-Bolt Pipe Clamp



## CERTIFICATIONS



## FEATURES

Clamp for bonding conductor to handrails, pipes and rebar to lightning protection system

Listed to UL® 96

## SPECIFICATIONS

**Conductor Size, UL:** Class 1 - Class 2 (4/0 Max);Secondary

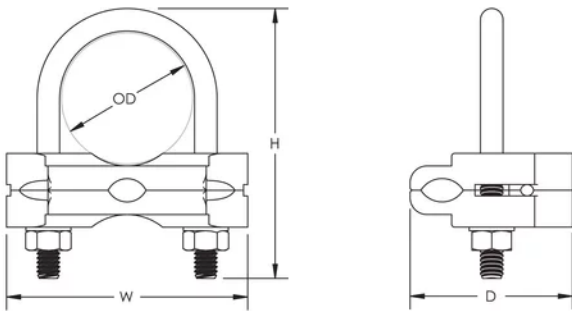
Table 1/2

Catalog Number	Material	Finish	Outer Diameter (OD)	Depth (D)	Height (H)	Width (W)
LPA570	Aluminum	Bare	17.3 - 38.1 mm	45.72mm	76.2 mm	67.82 mm
LPC570	Brass	Bare	17.3 - 38.1 mm	45.72mm	76.2 mm	67.82 mm
LPC570L	Brass	Tinned	17.3 - 38.1 mm	45.72mm	76.2 mm	67.82 mm

Table 2/2

Catalog Number	Unit Weight
LPA570	0.13 kg
LPC570	0.32 kg
LPC570L	0.32 kg

## DIAGRAMS



## WARNING

nVent products shall be installed and used only as indicated in nVent's product instruction sheets and training materials. Instruction sheets are available at [www.nvent.com](http://www.nvent.com) and from your nVent customer service representative. Improper installation, misuse, misapplication or other failure to completely follow nVent's instructions and warnings may cause product malfunction, property damage, serious bodily injury and death and/or void your warranty.

⚠ WARNING: This product can expose you to chemicals including lead, which is known to the State of California to cause cancer and birth defects or other reproductive harm. For more information go to [www.P65Warnings.ca.gov](http://www.P65Warnings.ca.gov).

### North America

+1.800.753.9221

Option 1 – Customer Care

Option 2 – Technical

Support

### Europe

Netherlands:

+31 800-0200135

France:

+33 800 901 793

### Europe

Germany:

800 1890272

Other Countries:

+31 13 5835404

### APAC

Shanghai:

+ 86 21 2412 1618/19

Sydney:

+61 2 9751 8500



Our powerful portfolio of brands:

CADDY

ERICO

HOFFMAN

ILSCO

SCHROFF

TRACHTE