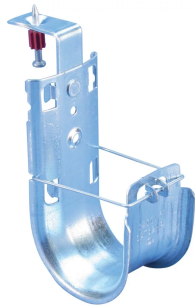


nVent CADDY Cat HP J-Hook with Shot-Fire Bracket



FEATURES

Provides optimal support for high-performance data cable, up to and including Cat 5e, Cat 6, Cat 6A, Cat 7 and fibre optic

Complete with shot-fire bracket and pre-assembled drive pin from DEWALT®

Quickly and easily attaches to concrete, steel or composite metal decking

Integrated pin installs easily using powder-actuated or single-shot gas-actuated tools

Rounded edges on J-Hooks provide proper bend radius support for high performance data cables

Provides superior fill capacity and load rating over most other non-continuous cable support alternatives

Complies with EN 50174-2

Meets ISO®/IEC 14763-2, ANSI®/TIA 568 and ANSI®/TIA 569

ICC-ES ESR-2024 evaluation report available for drive pin from DEWALT®

SPECIFICATIONS

Finish: Electrogalvanized;Pregalvanized

Material: Steel

Table 1/2

Catalog Number	Article Number	Diameter (Ø)	Area	Cable Capacity, Cat 5e	Cable Capacity, Cat 6	Cable Capacity, Cat 6A
CAT16HPSF	181673	25 mm	690mm²	20	15	10

CatalogNumber	Article Number	Diameter (Ø)	Area	Cable Capacity, Cat 5e	Cable Capacity, Cat 6	Cable Capacity, Cat 6A
CAT21HPSF	181674	33.3 mm	1174mm ²	50	40	25
CAT32HPSF	181675	50 mm	2561mm ²	90	60	35
CAT64HPSF	181677	100 mm	9987mm ²	330	220	140
CAT48HPSF	181676	75 mm	5974mm ²	200	150	80

Table 2/2

Catalog Number	Article Number	Height (H)	A	Static Load
CAT16HPSF	181673	120.7 mm	33 mm	270N
CAT21HPSF	181674	130.2 mm	33 mm	270N
CAT32HPSF	181675	139.7 mm	33 mm	270N
CAT64HPSF	181677	203.2 mm	33 mm	270N
CAT48HPSF	181676	185.2 mm	33 mm	270N

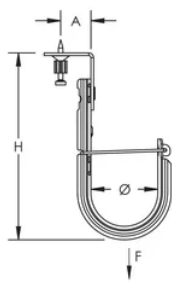
ADDITIONAL PRODUCT DETAILS

Uses Powers Fasteners, Inc. part number 50032.

Static load was established based on a 1" (25.4 mm) embedment depth and 3,000 psi (20.68 MPa) lightweight concrete. For variations in embedment and material please consult anchors.dewalt.com.

Pre-assembled drive pin from Powers Fasteners, Inc. works with Powers® C4CZ, Simpson® GCN-MEPKT, SPIT® P1000, P200, P2201, P3500 / PA3500, P35s, P45, P60, P7201, Sniper; Ramset® 721, Cobra, D45 / D60 / D60L, M70, SA270, T3SS, TS750P, TS60P, Viper; Hilti® DX35, DX350 / DX351 / DX36M, DX100 / DX200, DX460, DXA40, DXA41, DXE72 / DX400; Würth® Diva-1, BST-1, BST-2 or equivalent nailers.

DIAGRAMS



WARNING

nVent products shall be installed and used only as indicated in nVent's product instruction sheets and training materials. Instruction sheets are available at www.nvent.com and from your nVent customer service representative. Improper installation, misuse, misapplication or other failure to completely follow nVent's instructions and warnings may cause product malfunction, property damage, serious bodily injury and death and/or void your warranty.

North America

+1.800.753.9221
Option 1 – Customer Care
Option 2 – Technical
Support

Europe

Netherlands:
+31 800-0200135
France:
+33 800 901 793

Europe

Germany:
800 1890272
Other Countries:
+31 13 5835404

APAC

Shanghai:
+ 86 21 2412 1618/19
Sydney:
+61 2 9751 8500



Our powerful portfolio of brands:

CADDY ERICO HOFFMAN ILSCO SCHROFF TRACHTE

